

Notice: Variation of Permit

This permit has been varied by the Scottish Environment Protection Agency (SEPA) in exercise of its powers under Regulation 46 of the Pollution Prevention and Control (Scotland) Regulations 2012 (“the Regulations”). The terms used in this notice, unless otherwise defined, have the same meaning as in the Regulations.

Permit Number:	PPC/A/1008883
Site address:	Bankhead Recycling Centre, Duffshill Road, Portlethen, Aberdeenshire AB12 4RX
Operator:	A & M Smith Recycling Services Ltd SC248844 Bankhead Recycling Centre, Duffshill Road, Portlethen, Aberdeenshire AB12 4RX
Variation Number:	VAR01
Effective Date of Variation:	29/04/2022
Details of Variation:	The permit is varied as specified in the Schedule attached.

Variation Schedule

The permit has been varied as follows:

1. The following is added to the “Interpretation of Terms”:

“Waste Treatment BATc” – refers to the EU Commission Implementing Decision 2018/1147 of the 10 August 2018 establishing the best available techniques (BAT) conclusions for waste treatment, under Directive 2010/75/EU of the European Parliament and of the Council.

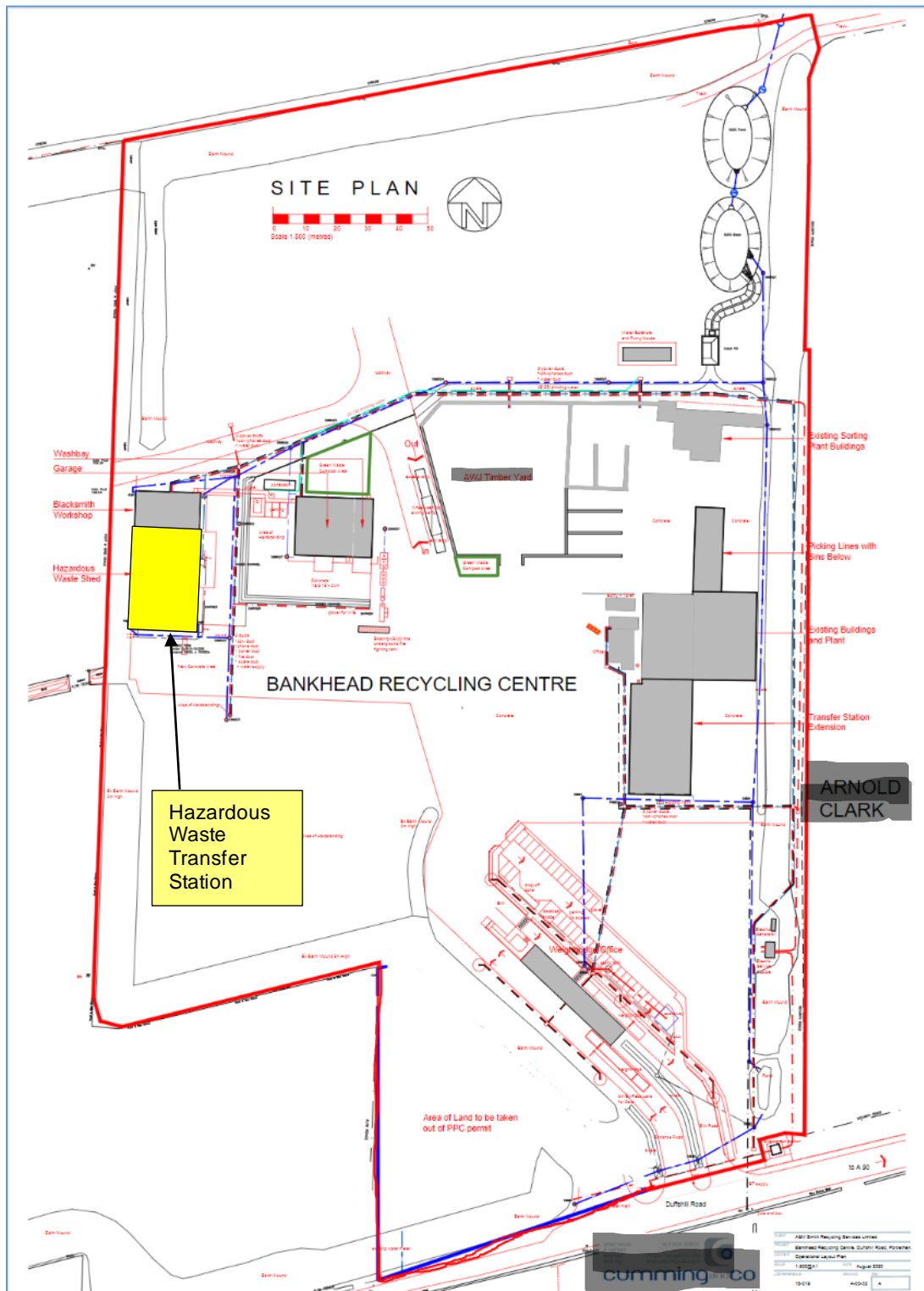
2. Section 1.1 is deleted and the following Section 1.1. is inserted:

1.1 Description of the Permitted Installation

- 1.1.1 The permitted installation to which this Permit applies (“the Permitted Installation”) is:
 - a) The stationary technical units specified in paragraph 1.1.4 (the Stationary Technical Unit), where the stated activities specified in paragraph 1.1.3 are carried out (“the Activities”), together with the directly associated activities specified in paragraph 1.1.5 (“the Directly Associated Activities”).
 - b) The site of the Permitted Installation is delineated in red on the Site Plan (“the Site Boundary”) in Appendix 1.
- 1.1.2 The general location of the Permitted Installation is as shown on the Location Plan in Appendix 2.
- 1.1.3 The Activities carried out at the Stationary Technical Units are:
 - a) The disposal of waste in a landfill for inert waste to which the Landfill Regulations apply, as described in Schedule 1, Section 5.2, Part A, (b) of the Regulations;
 - b) The bulking and repackaging of hazardous waste at an installation with a capacity exceeding 10 tonnes per day as described in Schedule 1, Section 5.3, Part A, (b), (iv) of the Regulations;
 - c) The temporary storage at an installation with a capacity of more than 50 tonnes of hazardous waste pending any of the activities described in any of the Sections 5.1 to 5.3 of the Regulations, as described in Schedule 1, Section 5.6, Part A, (a) of the Regulations.

- 1.1.4 The Stationary Technical Unit comprises the following:
- a) The inert landfill site where the activity described in 1.1.3(a) is carried out;
 - b) Hazardous Waste Transfer Station (as identified in yellow on the Site Plan in Appendix 1) where the activities stated in 1.1.3 b) and c) are carried out; and
 - c) Waste Transfer Facility.
- 1.1.5 The following Directly Associated Activities are carried out on the Site:
- a) The onsite washing of containers used to transport waste onto site within the Hazardous Waste Transfer Station;
 - b) The collection and storage of any run-off from the Hazardous Waste Transfer Station in a dedicated sealed drainage system including a 10,000 litre holding tank;
 - c) The treatment and storage of non-hazardous and inert waste at the Waste Transfer Facility; and
 - d) The bulking, repackaging and storage of non-hazardous waste at the Hazardous Waste Transfer Station.
- 1.1.6 For the purposes of this Permit, the Activities and Directly Associated Activities shall be known together as “the Permitted Activities”.
- 1.1.7 For the purposes of this Permit, the Blacksmith Workshop is not part of the Permitted Activities.

3. Appendix 1 Site Plan is deleted, and Appendix 1 Site Plan below is inserted:



4. Condition 4.3.1 is deleted and replaced with the following Condition 4.3.1:

4.3.1 No hazardous waste or liquid waste shall be accepted at the Site Landfill or Waste Transfer Facility.

5. The new Schedule 12 below, has been inserted after Schedule 11:

12 HAZARDOUS WASTE TRANSFER STATION

12.1 General

12.1.1 This schedule shall only apply to the Hazardous Waste Transfer Station as defined in condition 1.1.4 b).

12.2 Incident Prevention and Mitigation Plan

12.2.1 The Operator shall prepare, implement, and maintain an “Incident Prevention and Mitigation Plan”. The plan shall identify all hazards posed by the Hazardous Waste Transfer Station and the activities undertaken within, and define the steps taken by the Operator to ensure that all preventative measures are in place to avoid an Incident to any medium, and that any Incident that does occur is mitigated effectively to limit its environmental consequences.

12.3 Waste Types and Quantities

12.3.1 Only wastes detailed in Table 12.3.1 below can be accepted and stored in the quantity defined in column 2:

Table 12.3.1

Waste Types	Maximum Storage Quantity (tonnes)
Non-hazardous liquids	75
Hazardous Soils	70
Batteries	10
WEEE	10
Other hazardous solid waste (e.g. contaminated drums)	20
Asbestos	5
Oil	50
Other liquid hazardous	10

12.3.2 Waste types specified in Table 12.3.2 must not be accepted at the Hazardous Waste Transfer Station:

Table 12.3.2

Wastes excluded	
16 01	All wastes defined under this Section of the European Waste Catalogue relating to end of life vehicles.
16 04	All wastes defined under this Section of the European Waste Catalogue relating to waste explosives.
18 01	All wastes defined under this Section of the European Waste Catalogue relating to wastes from natal care, diagnosis, treatment or prevention of disease in humans
18 02	All wastes defined under this Section of the European Waste Catalogue relating to wastes from research, diagnosis, treatment or prevention of diseases involving animals.

12.3.3 The total quantity of waste which can be accepted annually at the Hazardous Waste Transfer Station shall not exceed 2,500 tonnes.

12.3.4 The total quantity of waste which can be stored at the Hazardous Waste Transfer Station at any one time shall not exceed 250 tonnes.

12.4 Waste Pre-Acceptance Procedure

12.4.1 The Operator must develop, implement and maintain procedures for undertaking and recording pre-acceptance and waste characterisation in accordance with BAT 2a. of the Waste Treatment BATc.

12.5 Waste Acceptance Procedure

12.5.1 The Operator must develop, implement and maintain Hazardous Waste Acceptance Procedures in accordance with BAT 2b. of the Waste Treatment BATc.

12.5.2 No wastes can be accepted onto site if there is no safe storage capacity remaining.

12.6 Waste Tracking System and Inventory

12.6.1 The operator must develop, implement and maintain a hazardous waste tracking system, and hazardous waste inventory in accordance with BAT 2c. of the Waste Treatment BATc.

12.7 Waste Storage and Segregation

12.7.1 The Hazardous Waste Transfer Station building must be designed and maintained appropriately to store the waste types being accepted onto site in a manner which will protect the environment.

12.7.2 Waste must not be stored for longer than six months from date of its receipt.

- 12.7.3 All wastes must be stored in sealed containers within the Hazardous Waste Transfer Station building.
- 12.7.4 All storage areas shall be cleared of all wastes at least once every 6 months and the area thoroughly cleaned. Details of such cleaning shall be recorded.
- 12.7.5 All waste storage areas shall be clearly demarcated and labelled. The label shall identify the maximum number of containers (i.e., drums, IBCs, etc) that can safely be stored in the location, and where relevant, the hazards associated with the waste stored there. The labels shall be sized so that this information is legible from out with the storage area.
- 12.7.6 The Operator must ensure incompatible wastes are adequately separated from each other, and, or, suitable engineering measures are in place to ensure effective segregation.
- 12.7.7 The Operator must ensure there is a designated area within the Hazardous Transfer Station building for wastes which require quarantine.

12.8 Bulking and Repackaging of Wastes

- 12.8.1 The Operator must develop, implement and maintain appropriate procedures and processes which ensure that the bulking and repackaging activities undertaken on site are in accordance with BAT 5. of the Waste Treatment BATc.
- 12.8.2 Only compatible wastes can be bulked and or repackaged together.
- 12.8.3 No hazardous waste can be bulked and or repackaged with non-hazardous waste.
- 12.8.4 No wastes can be bulked or repackaged, if by doing so it means that the waste must then be treated higher up the waste hierarchy, than if they had not been subject to the bulking or repackaging.
- 12.8.5 The bulking of liquid waste from one container to another must be undertaken within a bunded area.

12.9 Container Washing

- 12.9.1 The Operator must develop, implement and maintain appropriate procedures and processes for the washing of containers.
- 12.9.2 Notwithstanding condition 12.9.1 all container washing must be undertaken in a bunded area served by a sealed drainage system.

12.10 Waste Oils

12.10.1 Waste oils with different characteristics must not be mixed.

12.10.2 Waste oils must not be mixed with other kinds of wastes or substances if such mixing would impede their treatment.

12.11 Asbestos Waste

12.11.1 Asbestos must be stored in a lockable container or skip within the Hazardous Waste Transfer Station building. The container shall be kept locked at all times other than when asbestos waste is being deposited in the container. No asbestos waste shall be deposited or allowed to accumulate outside the containers within buildings being used for waste storage. Containers used to store asbestos waste shall not be used for any other purpose.

12.11.2 The operator shall ensure that during transport, handling and storage of waste containing asbestos fibres or dust there are no emissions of such fibres and dust.

12.11.3 Full containers of asbestos waste shall be removed from the Hazardous Waste Transfer Station as soon as possible, and in any case, at least every three months.

12.12 Protection of Soil and Groundwater

12.12.1 Unless specified elsewhere in this permit there shall be no emissions of any pollutants to soil or groundwater from the Hazardous Waste Transfer Station.

12.12.2 All drainage from the Hazardous Waste Transfer Station must be collected and directed to a sealed drainage system which drains to the dedicated 10,000 litre holding tank.

12.12.3 The Operator shall record and maintain, up to date plans that identify the configuration and specification of all drains and subsurface pipework, and the position and purpose of all subsurface sumps and storage vessels, that are used or have been used in association with the activities undertaken within the Hazardous Waste Transfer Station from its installation until the permit is surrendered.

- 12.12.4 At least every four years, the operator shall carry out a systematic assessment of all drains, subsurface pipe-work and sub-surface sumps and storage vessels, to demonstrate their integrity, using tests in accordance with recognised international standards. A written report of each assessment shall be recorded and reported to SEPA. The report shall include details of and timescales for any additional measures that are required to prevent emissions to soil and groundwater.
- 12.12.5 At least annually, the Operator shall carry out a systematic assessment and inspection of internal floors and external yard surfaces in order to ensure compliance with Condition 12.12.1. A written report of each assessment shall be recorded and reported to SEPA. The report shall include details of and timescales for any additional measures that are required to prevent emissions to soil and groundwater.
- 12.12.6 Any remedial action or upgrade identified by the systematic assessment and inspection required by Conditions 12.12.4 and 12.12.5 shall be completed within 3 months of completion of the survey or within such a timescale as is agreed in writing with SEPA.
- 12.12.7 The Operator shall maintain a record of any incident that has, or might have, impacted on the condition of any soil or groundwater under, or adjacent to, the Hazardous Waste Transfer Station, either as a result of that incident or as a result of an accumulation of incidents, together with a record of any further investigation or remediation work carried out.
- 12.12.8 Notwithstanding the requirements of Condition 2.3.6, the record required by Condition 12.12.7 shall be preserved until this permit is surrendered.
- 12.12.9 The Operator shall monitor the groundwater for the Relevant Hazardous Substances (RHS) specified in Table 12.12.1, at the frequency specified, the purpose of which shall be to identify groundwater contamination associated with the activities specified by those Relevant Hazardous Substances. Each Assessment shall be recorded and reported to SEPA within one month of completion. The first assessment shall be completed by 6 months from the date of this variation. The assessment shall include interpretation of the results with reference to previous monitoring undertaken, (including the site and where applicable baseline reports) and operations at the Permitted Installation and details of corrective actions that are required to protect groundwater and remedy any contamination that has occurred as a result of permitted activities.

Table 12.12.1: – Groundwater Monitoring Requirements

Relevant hazardous substance	Location and activity	Frequency
Heavy Metals (Including but not limited to Arsenic, Copper, Cadmium, Chromium, Lead, Nickel, Mercury, Zinc). TPH CWG PAH (USEPA 16) sVOC suite VOC suite Ammonia pH COD	<i>Hazardous Waste Transfer Station (Perimeter boreholes as per baseline report)</i>	2 years

- 12.12.10 The Operator shall submit a detailed groundwater monitoring plan, for the monitoring required by condition 12.12.9 to SEPA at least 1 month in advance of carrying out the monitoring, which shall include the locations at which monitoring shall be carried out and the frequency and methodology which shall be used.
- 12.12.11 The operator shall carry out the monitoring required by condition 12.12.9 in accordance with the groundwater monitoring plan required by condition 12.12.10.
- 12.12.12 The operator shall review the plan required by Condition 12.12.10 no later than 6 months after each monitoring event. The purpose of the review shall be to determine whether any changes to monitoring locations, frequency or parameters are required and where changes are proposed, submit a revised plan to SEPA.
- 12.12.13 Notwithstanding the requirements of Condition 2.2 all plans, monitoring and assessments reports undertaken in accordance with Conditions 12.12.4, 12.12.5, 12.12.9 and 12.12.11 shall be preserved until the permit is surrendered.

12.12.14 The operator shall maintain the groundwater monitoring wells detailed in the plan required in Condition 12.12.9 in a condition fit for purpose, unless otherwise agreed in writing with SEPA. Where a well's function is compromised it shall be repaired or replaced to allow sample collection in accordance with Condition 12.12.9.

12.13 Water Environment Condition

12.13.1 No liquid effluent arising from the permitted activities at the Hazardous Waste Transfer Station shall be discharged directly to the water environment.