

# North Shore West, Loch Erisort

## Hydrographic Data Report: Deployment ID194

27<sup>th</sup> February to 1<sup>st</sup> May 2018

March 2023  
Mowi Scotland Limited

› Registered in Scotland No. 138843 <b>Registered Office,</b> <b>1st Floor, Admiralty Park</b> <b>Admiralty Road</b> <b>Rosyth</b> <b>FIFE</b> <b>KY11 2YW</b>	<small>OFFICE</small> Farms Office, Glen Nevis Business Park PH33 6RX Fort William	<small>PHONE</small>	<small>FAX</small> -
	<small>POSTAL</small> Farms Office, Glen Nevis Business Park PH33 6RX Fort William	<small>MAIL</small> environment@mowi.com	<small>WEB</small> <a href="http://mowi.com">http://mowi.com</a>

## CONTENTS

<b>1.</b>	<b>INTRODUCTION .....</b>	<b>5</b>
<b>2.</b>	<b>MATERIALS &amp; METHODS.....</b>	<b>5</b>
	<i>2.1 Bathymetry.....</i>	<i>5</i>
	<i>2.2 Current Data .....</i>	<i>6</i>
	<i>2.3 Magnetic Variation .....</i>	<i>6</i>
	<i>2.4 Data Processing.....</i>	<i>7</i>
	<i>2.5 Meteorological Data .....</i>	<i>10</i>
<b>4.</b>	<b>HYDROGRAPHIC DATA SUMMARY SHEETS .....</b>	<b>11</b>
<b>5.</b>	<b>SUMMARY OF CURRENT DATA – ID194.....</b>	<b>17</b>
<b>6.</b>	<b>CONCLUSION.....</b>	<b>19</b>
	<b>ANNEX 1. SURVEY EQUIPMENT DEPLOYMENT LOG.....</b>	<b>20</b>

## LIST OF FIGURES

Figure 1. Existing layout at the North Shore West site. The current meter deployment location is marked by the black triangle.	5
Figure 2. Bathymetry in the region around the existing North Shore West salmon farm.	6
Figure 3. Mean intensity of the ADCP signal for the ID194 dataset plotted by bin number.	9
Figure 4. Current Data Summary Sheet for the surface current cell 18, 20.7 m from seabed, 27 <sup>th</sup> February to 1 <sup>st</sup> May 2018 inclusive (ID194).	11
Figure 5. Current Data Summary Sheet for the cage bottom current cell 11, 13.7 m from seabed, 27 <sup>th</sup> February to 1 <sup>st</sup> May 2018 inclusive (ID194).	12
Figure 6. Current Data Summary Sheet for the near bottom current cell 1, 3.7m from seabed, 27 <sup>th</sup> February to 1 <sup>st</sup> May 2018 inclusive (ID194).	13
Figure 7. Cumulative Vector Plot of all velocity data from near surface cell for ID194.	14
Figure 8. Cumulative Vector Plot of all velocity data from cage bottom cell for ID194.	15
Figure 9. Cumulative Vector Plot of all velocity data from near bottom cell for ID194.	16
Figure 10. Summary of heading data from deployment ID194.	18
Figure 11. Summary of pitch and roll data from deployment ID194.	18
Figure 12. Pressure data from deployment ID194.	19

## LIST OF TABLES

Table 1: Sentinel V100 ADCP Specifications.	8
Table 2. Summary of current meter deployment	17
Table 3. Ranked percentiles for current speed at all three depths	17
Table 4. Major axis	17
Table 5. Mean and residual currents	17

**QUALITY ASSURANCE**

Mowi Scotland Ltd is ISO9001 and ISO14001 accredited and all project management follows policies designed to ensure that the collection, collation and reporting of information produced in the course of our operations is done to a consistently high standard meeting the requirements of the end user.

# 1. Introduction

Mowi Scotland Ltd. is preparing an application to the Scottish Environmental Protection Agency (SEPA) for a medicine consent change at the North Shore salmon farm, located within Loch Erisort, Isle of Lewis.

Mowi Scotland Ltd. carried out a hydrographic survey at the site in 2018. Hydrographic data at North Shore West was gathered during this time in two deployments:

- i. 27<sup>th</sup> February to 1<sup>st</sup> May 2018 (ID194)
- ii. 2<sup>nd</sup> May to 12<sup>th</sup> July 2018 (ID218)

This report describes the data from the 27<sup>th</sup> February to 1<sup>st</sup> May 2018 deployment at North Shore West (ID194). The purpose of this report is to assess the suitability of the collected hydrographic data for calibration of a hydrodynamic model of the Loch Erisort region and input into the UnPTRACK model.

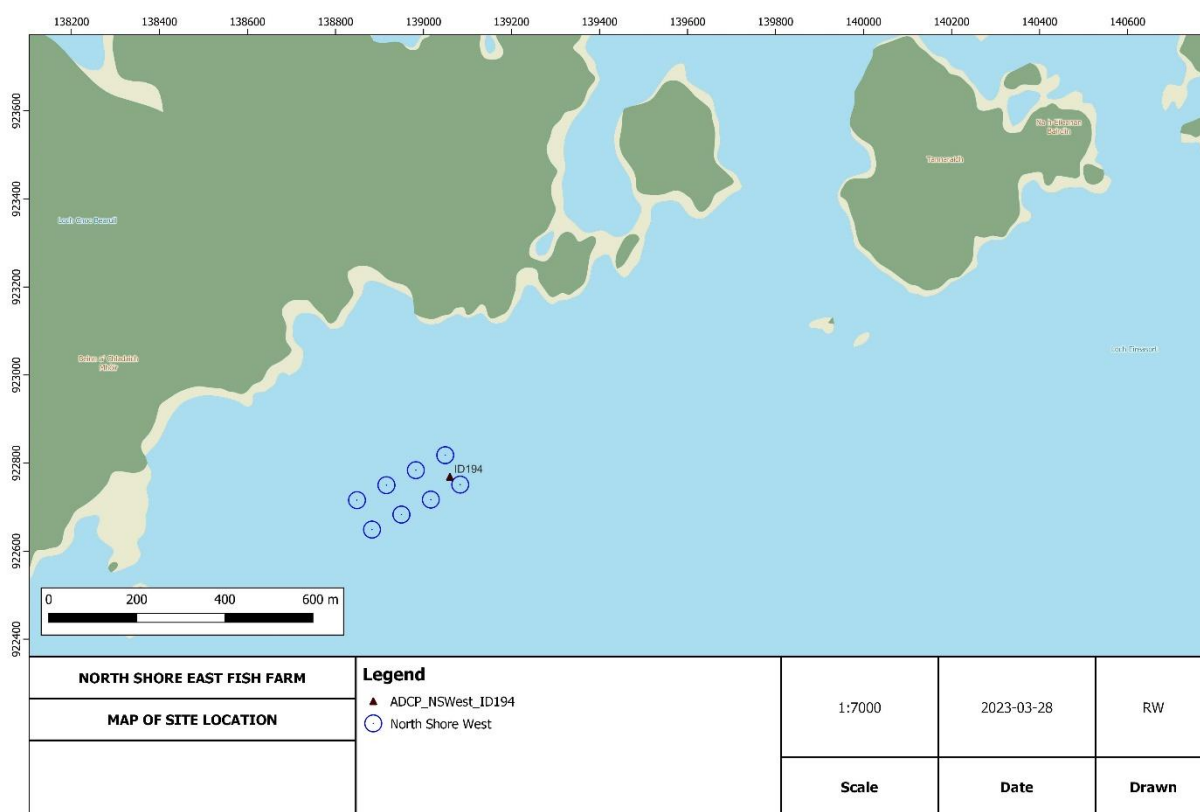


Figure 1. Existing layout at the North Shore West site. The current meter deployment location is marked by the black triangle.

# 2. Materials & Methods

## 2.1 Bathymetry

Bathymetry was taken from the ECLH model which has reasonably high spatial resolution around Loch Erisort (Figure 2).

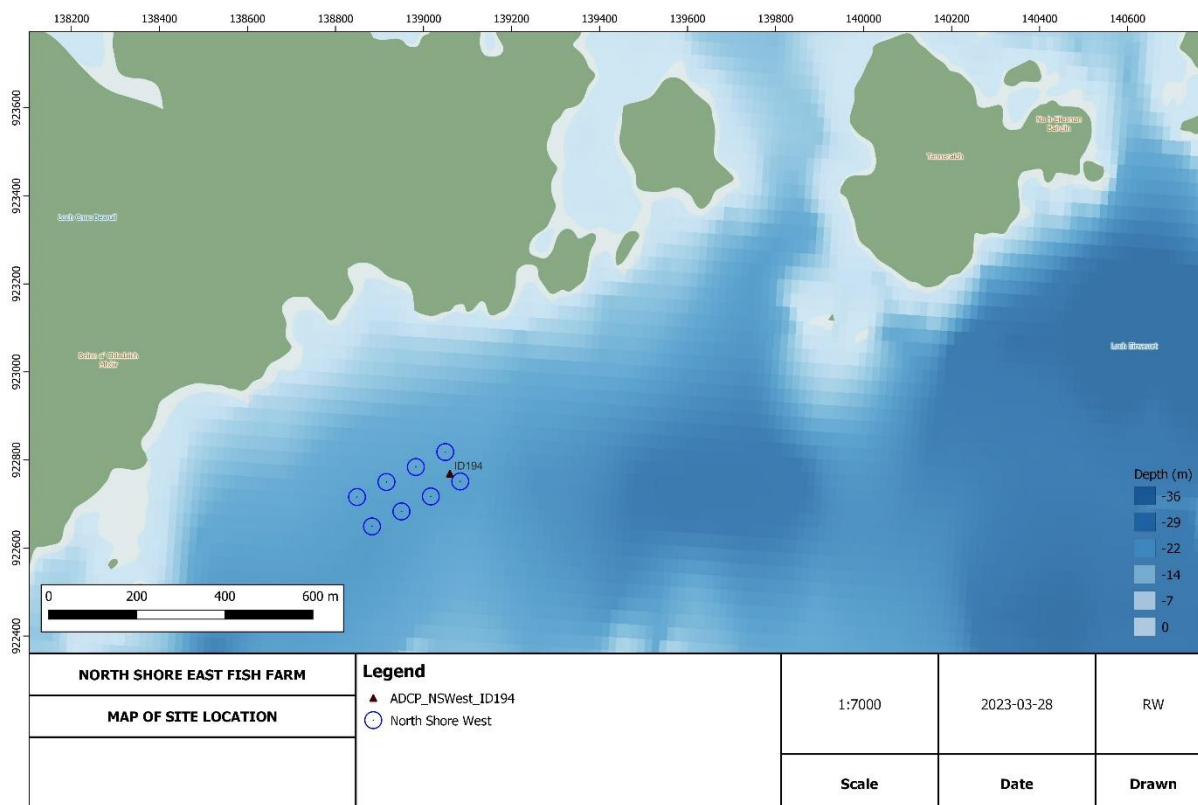


Figure 2. Bathymetry in the region around the existing North Shore West salmon farm.

## 2.2 Current Data

Mowi staff carried out hydrographic surveys at the site during 2018. The purpose of this hydrographic report is to assess the suitability of the collected hydrographic data for use with the UnPTRACK and hydrodynamic models. The data contained in this report were recorded at the site from 27<sup>th</sup> February to 1<sup>st</sup> May 2018 (62 days 22 hours of data; deployment ID194).

The Sentinel V100 (Wide) ADCP (Table 1), within its mooring frame, was positioned at 58.11663 N, -6.43247 W (139060E 922769N), which was approximately 315m from the nearest shoreline and approximately 100 m from the centre of the cage group (Figure 1). The transducer head was 70 cm from the base of the mooring frame. The mean depth (derived from the pressure sensor) at the Sentinel V100 ADCP position was 26.53 m.

Initial soundings were taken to establish the possible depth the Sentinel V100 ADCP would be situated at during high tide and so that the most appropriate cell size could be determined. The cell size was set at 1.0 m and the number of cells to 45.

Data was automatically written and stored to the internal memory within the Sentinel V100 ADCP main body and then downloaded to computer after completion of the deployment period via WiFi.

## 2.3 Magnetic Variation

No magnetic variation correction was made to the Sentinel V100 ADCP during deployment, this was undertaken to the data after the instrument was recovered and data downloaded. The magnetic variation used was -4.02°; this was determined using the World Magnetic Model, produced jointly with the US National Oceanographic and Atmospheric Administration’s National Geophysical Data center. Further details can be found at <http://www.geomag.bgs.ac.uk/navigation.html>

## *2.4 Data Processing*

Upon retrieval of the Sentinel V100 ADCP current meter, all data was downloaded to a computer for analysis. The raw data file was opened in Teledyne's "Velocity" software and Matlab. Deployment diagnostic data (beam intensity, correlation, pitch and roll) were analysed to confirm that the deployment was successful with the instrument orientated upright. The heading data were also examined to identify any movement of the Sentinel V100 ADCP mooring frame during the deployment.

The diagnostic data suggested that velocities from the first 18 bins were valid (Figure 3). Calculations were undertaken to identify the cells to be used for surface and middle currents. Surface data was taken at an average depth (derived from the pressure sensor) of 5.8 m (cell 18), and cage-bottom data at 12.8 m (cell 11). Surface and middle cell heights were 20.7 m and 13.7 m from the seabed respectively. The bottom cell (cell 1) was at an average depth of 22.8 m and 3.7 m above the seabed.

Table 1: Sentinel V100 ADCP Specifications.

Depth Cell Size <sup>1</sup>	V20 (1000kHz)		V50 (500kHz)		V100 (300kHz)		
	Depth Cell Size <sup>1</sup>	Range (m) <sup>2,3</sup> Wide/Narrow	Std Dev (cm/s) <sup>3,4</sup> Wide/Narrow	Range (m) <sup>2,3</sup> Wide/Narrow	Std Dev (cm/s) <sup>3,4</sup> Wide/Narrow	Range (m) <sup>2,3</sup> Wide/Narrow	Std Dev (cm/s) <sup>3,4</sup> Wide/Narrow
	0.25m	18.0/22.6	19.2/36.5				
	0.3m	19.3/24.0	11.1/20.8				
	0.5m	20.2/24.9	7.1/13.4	44.1/57.6	19.2/36.5		
	1.0m	22.1/26.9	3.6/6.7	50.5/64.6	7.1/13.5	94.5/120.6	10.9/20.6
	2.0m	24.5/29.4	1.7/3.2	56.0/70.6	3.6/6.7	103.5/130.4	5.5/10.3
	4.0m	26.9/32.0	0.8/1.6	63.1/78.2	1.7/3.2	114.6/142.3	2.7/5.2
	6.0m			67.4/82.8	1.1/2.1	121.7/151.5	1.8/3.3
<b>Communications and Recording</b>	Wireless Internal memory	802.11b/g/n One 16GB Micro SD Card included					
<b>Profile Parameters</b>	Velocity accuracy  Velocity resolution Velocity range Ping rate	V20/V50: 0.3% of the water velocity relative to the ADCP ±0.3cm/s V100: 0.5% of the water velocity relative to the ADCP ±0.5cm/s 0.1cm/s ±5m/s (default); ±20m/s (maximum) Up to 4Hz					
<b>Echo Intensity Profile</b>	Vertical resolution Dynamic range Precision	Depth cell size 80dB ±1.5dB					
<b>Transducer and Hardware</b>	Beam angle Configuration Depth rating Materials	25° 4-beam, convex; 5th beam vertical 200m Transducer, housing, and end cap: plastic Connector: metal shell					
<b>Standard Sensors</b>	Temperature (mounted on transducer) Compass (magneto-inductive sensor) Tilt (MEMS accelerometers)  Pressure sensor (mounted on transducer)	Range -5° to 45°C, precision ±0.4°C, resolution 0.1° Accuracy 2° RMS, resolution 0.1°, max. dip angle 85° Pitch range ±90°, roll range ±180°, accuracy 2° RMS, precision 0.05° RMS, resolution 0.1° Range 300m, accuracy 0.1%FS					
<b>Power</b>	External DC input Internal battery voltage Battery capacity; over-the-counter @0°C Battery pack @5°C	12–20VDC 18VDC new 100 watt hours (typical) 510 watt hours					
<b>Software</b>	Teledyne RDI's new software included	ReadyW—Pre-deployment (testing, planning, and data recovery) <sup>5</sup> Velocity—Post-processing (data handling, display, and export) <sup>6</sup>					
<b>Environmental</b>	Standard depth rating Operating temperature Storage temperature (without batteries) Weight in air Weight in water	200m -5° to 45°C -30° to 60°C 7.5kg – 16.0kg 1.6kg – 6.0kg					
<b>Available Options</b>	External battery case • AC/DC power converter • 5th beam (at time of order only) • Waves processing • Straight or right-angle metal shell connector						
<b>Dimensions</b>	Special configuration drawing available upon request						

1 User's choice of depth cell not limited to the typical values specified.  
2 Ranges specified are typical at temperature of 5°C and salinity of 35psu; longer ranges are possible.  
3 User selects the bandwidth mode; wide = 25% or narrow = 6%.  
4 Standard deviations (Std Dev) are typical values for single ping data.  
5 Resident InADCP accessed via a web browser.  
6 Windows™ based software program.



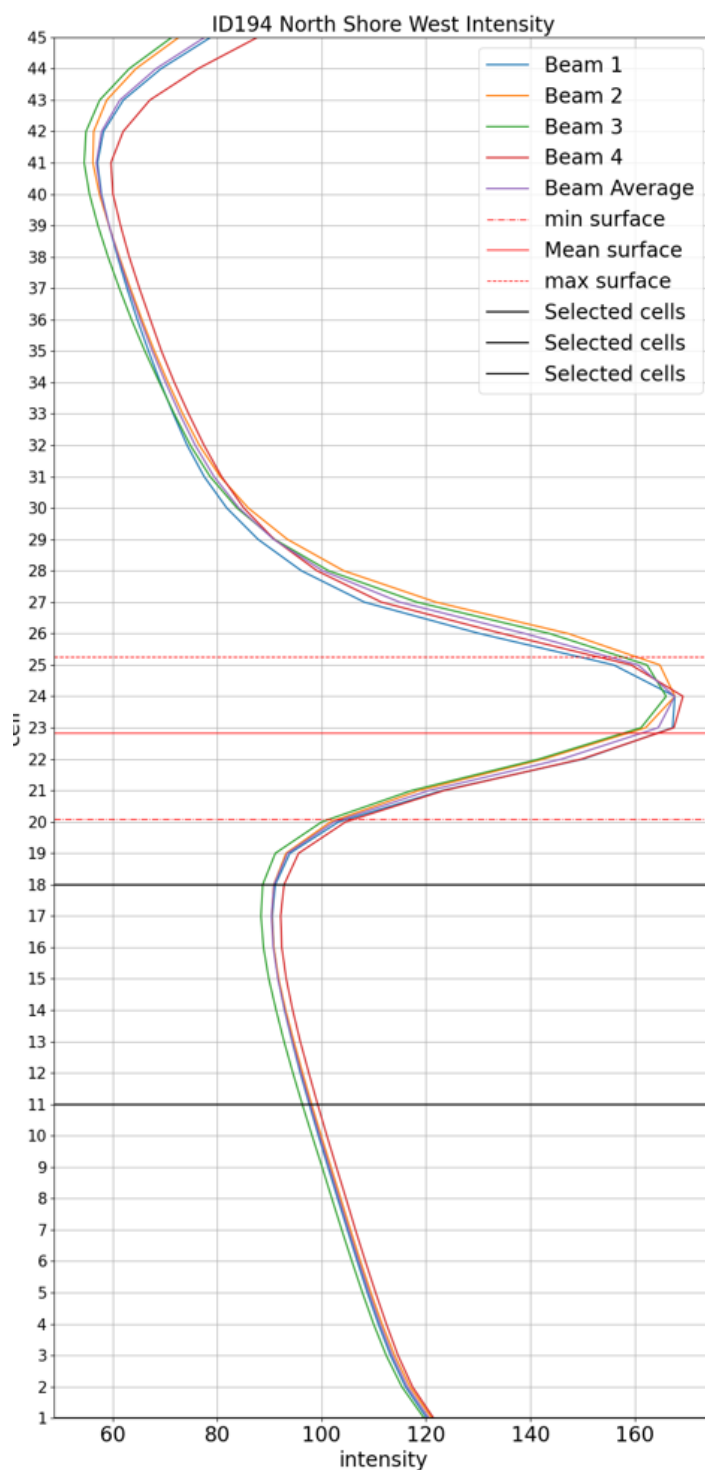


Figure 3. Mean intensity of the ADCP signal for the ID194 dataset plotted by bin number.

The ‘first cell range’ is automatically calculated by the instrument, which is the distance from the transducer head to the first cell. For this deployment, the first cell range was calculated as 3.0 m. This value is then added to the height of the instrument frame (0.7 m) to get the first cell height above the seabed, which equated to 3.7 m

Standard deviation has been assessed throughout the deployment to identify accurate and reliable data for near bed, middle (net depth) and surface cells using the following equation:

$$Cell\ StdDev = \frac{Instrument\ StdDev}{\sqrt{No.\ valid\ pings}} \quad (1)$$

The Instrument Standard Deviation (StdDev) in Equation 1 is determined using the deployment settings when the meter is programmed, examples of the StdDev values for different configurations are shown in Table 1. This deployment had a cell size of 1m which equates to an Instrument StdDev of 10.9 cm/s.

The Percentage of valid pings used to calculate Cell StdDev is derived using “Percentage Good” data which allows us to relate the StdDev to the actual data gathered. The percent good data is available for 1, 2, 3 and 4 beams which represent the following:

- Percent good 1 = % of good data computed from 3 Beams
- Percent good 2 = % of bad data due to more than 2 Beam bad
- Percent good 3 = % of bad data due to error velocity exceeded
- Percent good 4 = % of good data computed from 4 Beams

The method described has been used to calculate the Standard deviation throughout the deployment for the surface, middle and bottom cells; the average StdDev values for the surface, middle and bottom was 0.63cm/s, 0.63cm/s and 0.63cm/s respectively which are all within the SEPA criteria of 2cm/s.

### *2.5 Meteorological Data*

The collection of meteorological data is no longer required to support the assessment process and consequently has not been undertaken. The current data used is collected using multiple deployments and over a longer period and thus provides a more realistic representation of site conditions than short deployments, thus allowing an assessment of the influence of meteorological conditions.

## **3. Results and Discussion**

A summary of the current data is shown in Figure 4 to Figure 12 and in Table 2 to Table 5. Over the period analysed for this report, the near-surface, middle and bottom cells had current speed averages of 9.74 cm/s, 8.72 cm/s and 8.05 cm/s respectively. This gave an overall average of 8.84 cm/s. The orientation of the tidal velocities was south-west – north-east.

Residual currents at the surface (60°G, Figure 7) were toward the north-east while the mid-depth (345°G, Figure 8) were towards the north-west and near-bottom cells were toward the south-west (260°G, Figure 9). The magnitude of the residual currents for the surface, middle and bottom cells were moderate, with mean values of 0.027 m/s, 0.012 m/s and 0.034 m/s respectively.

## 4. Hydrographic Data Summary Sheets

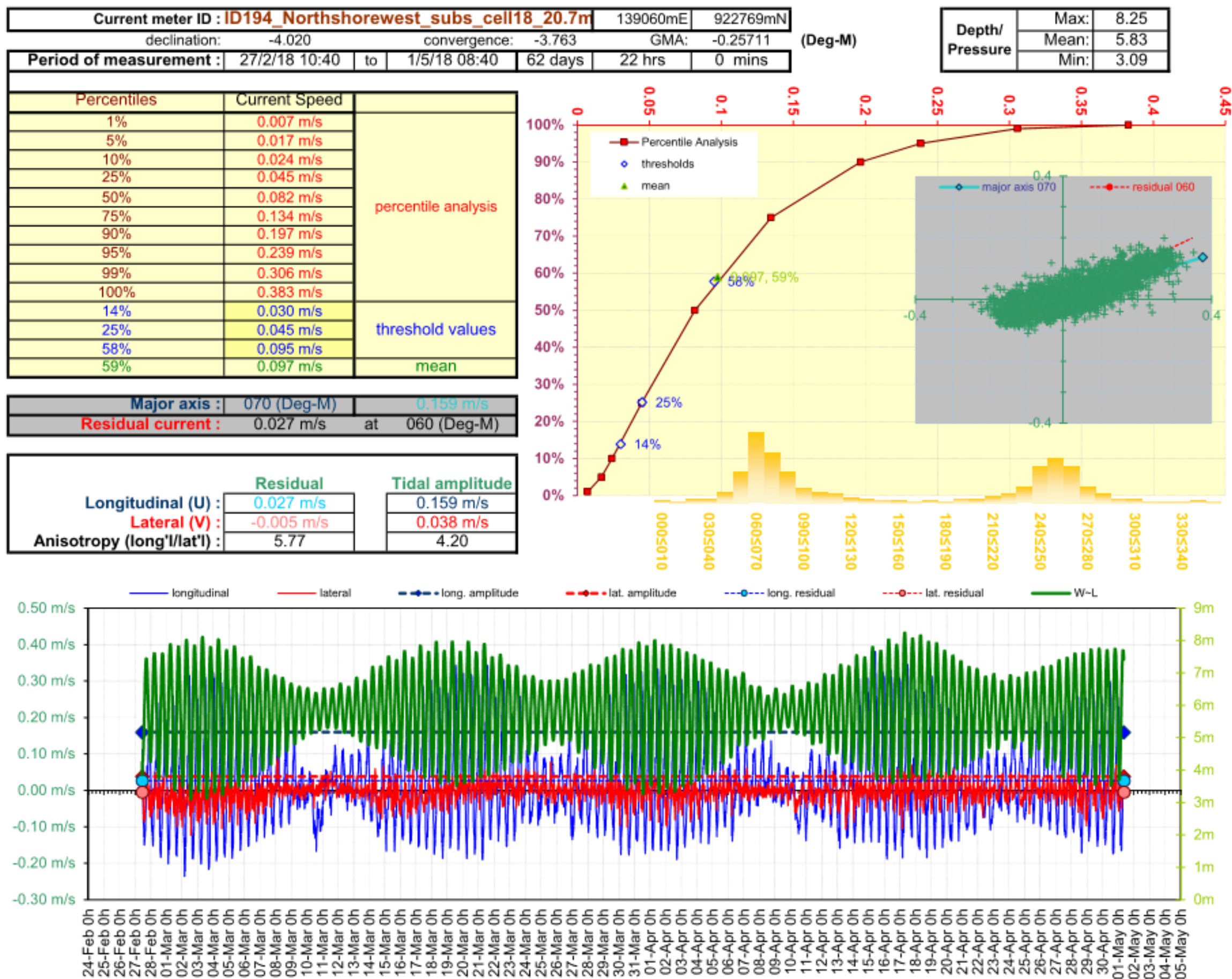


Figure 4. Current Data Summary Sheet for the surface current cell 18, 20.7 m from seabed, 27<sup>th</sup> February to 1<sup>st</sup> May 2018 inclusive (ID194).

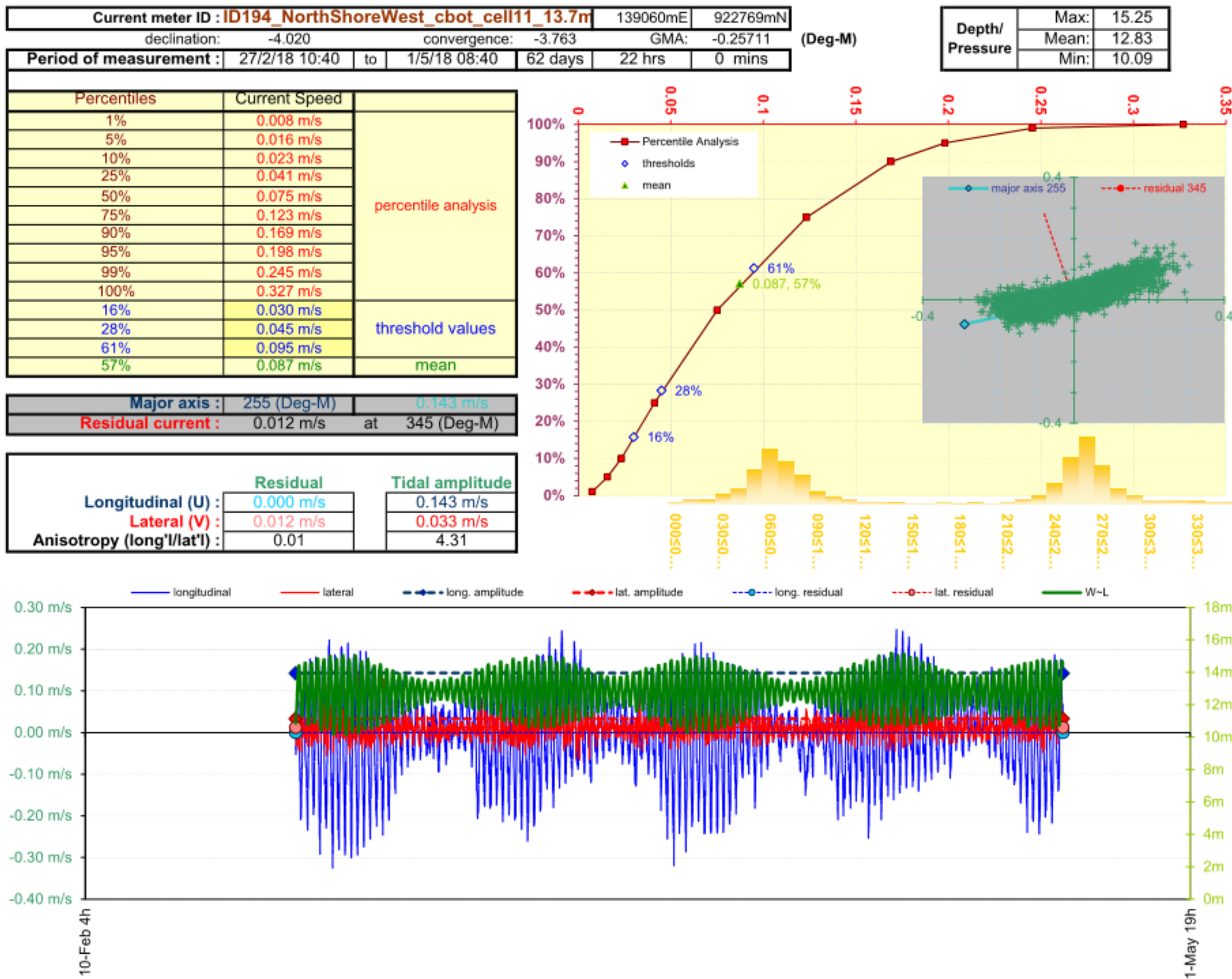


Figure 5. Current Data Summary Sheet for the cage bottom current cell 11, 13.7 m from seabed, 27<sup>th</sup> February to 1<sup>st</sup> May 2018 inclusive (ID194).



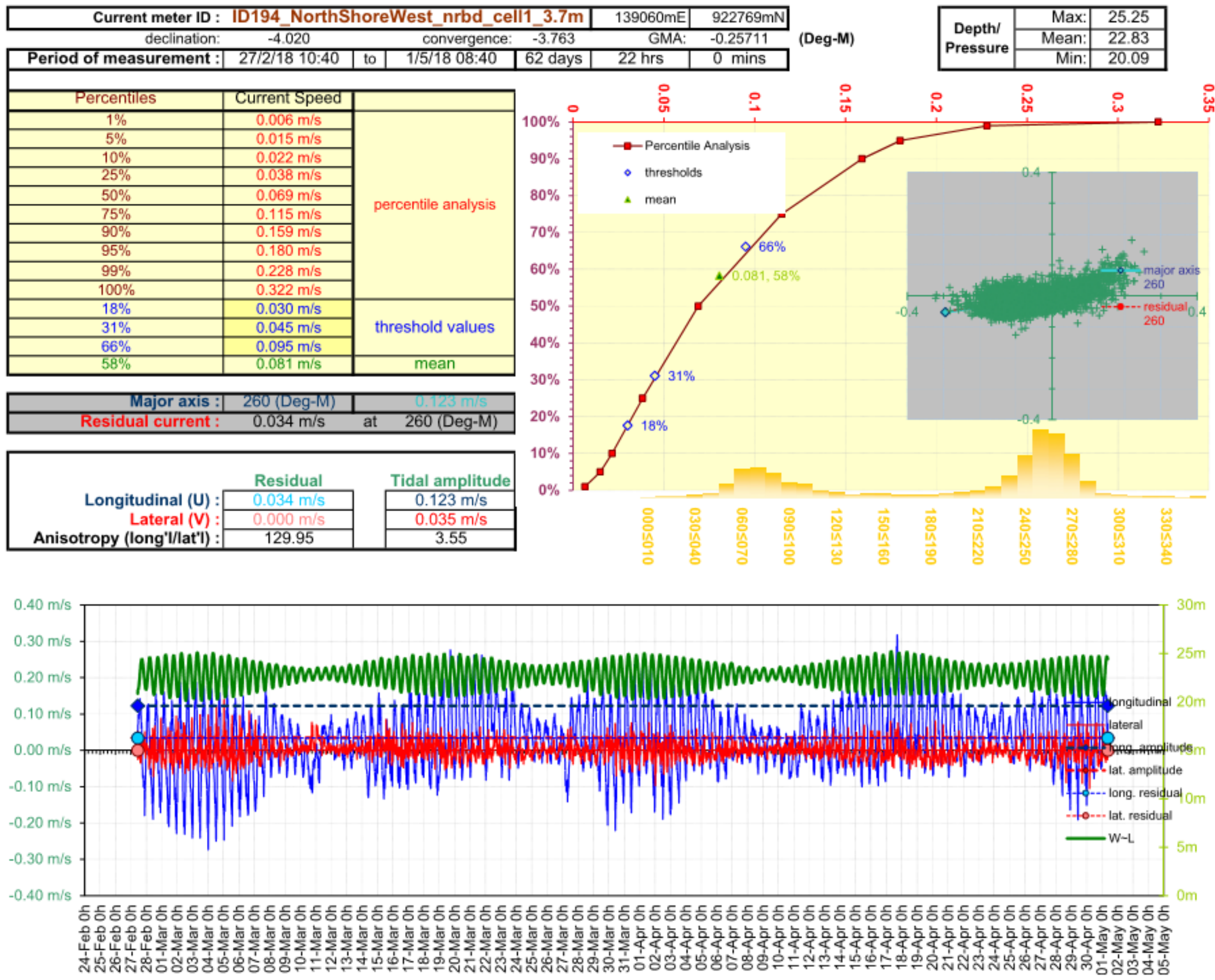


Figure 6. Current Data Summary Sheet for the near bottom current cell 1, 3.7m from seabed, 27<sup>th</sup> February to 1<sup>st</sup> May 2018 inclusive (ID194).

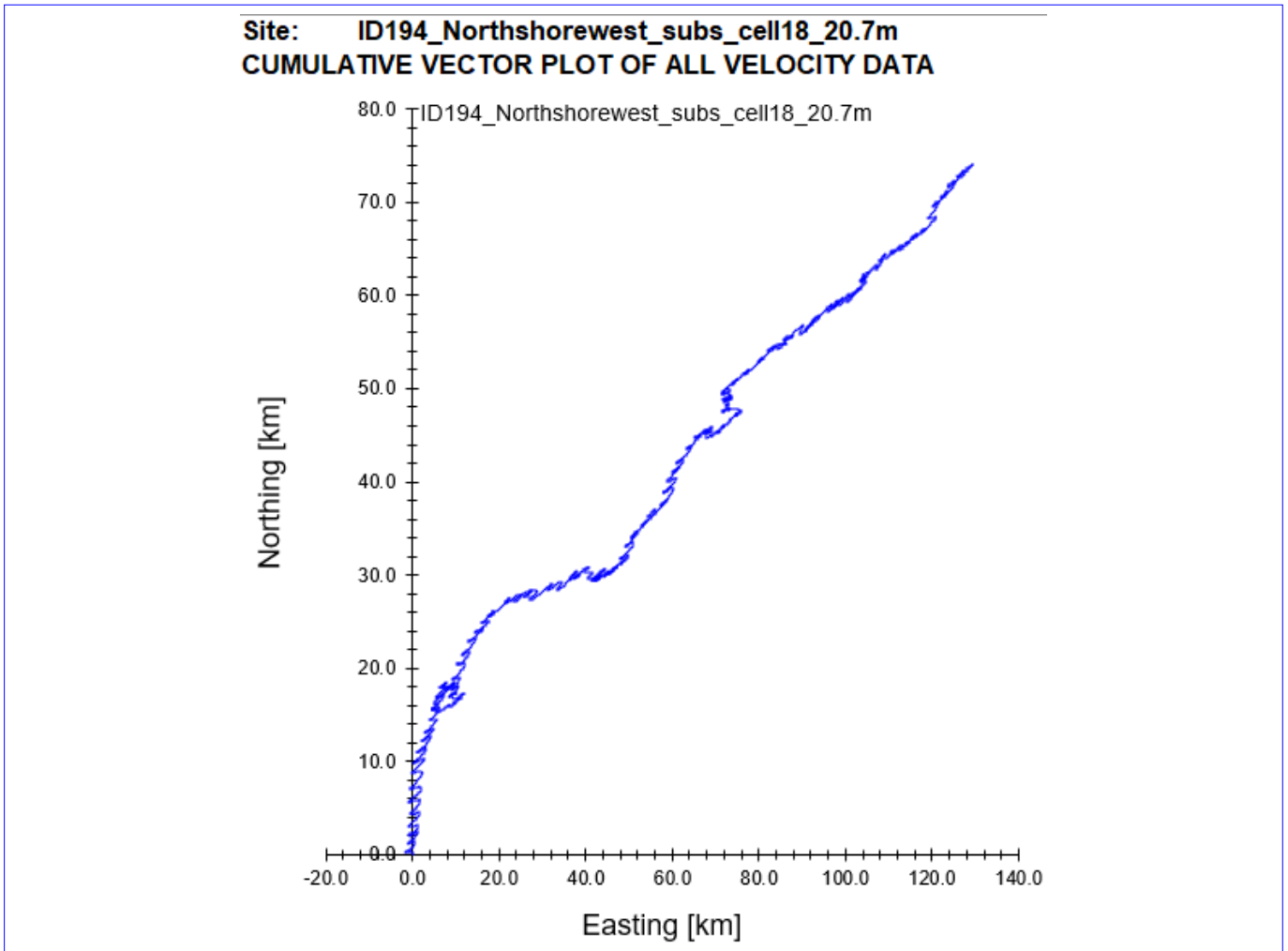


Figure 7. Cumulative Vector Plot of all velocity data from near surface cell for ID194.

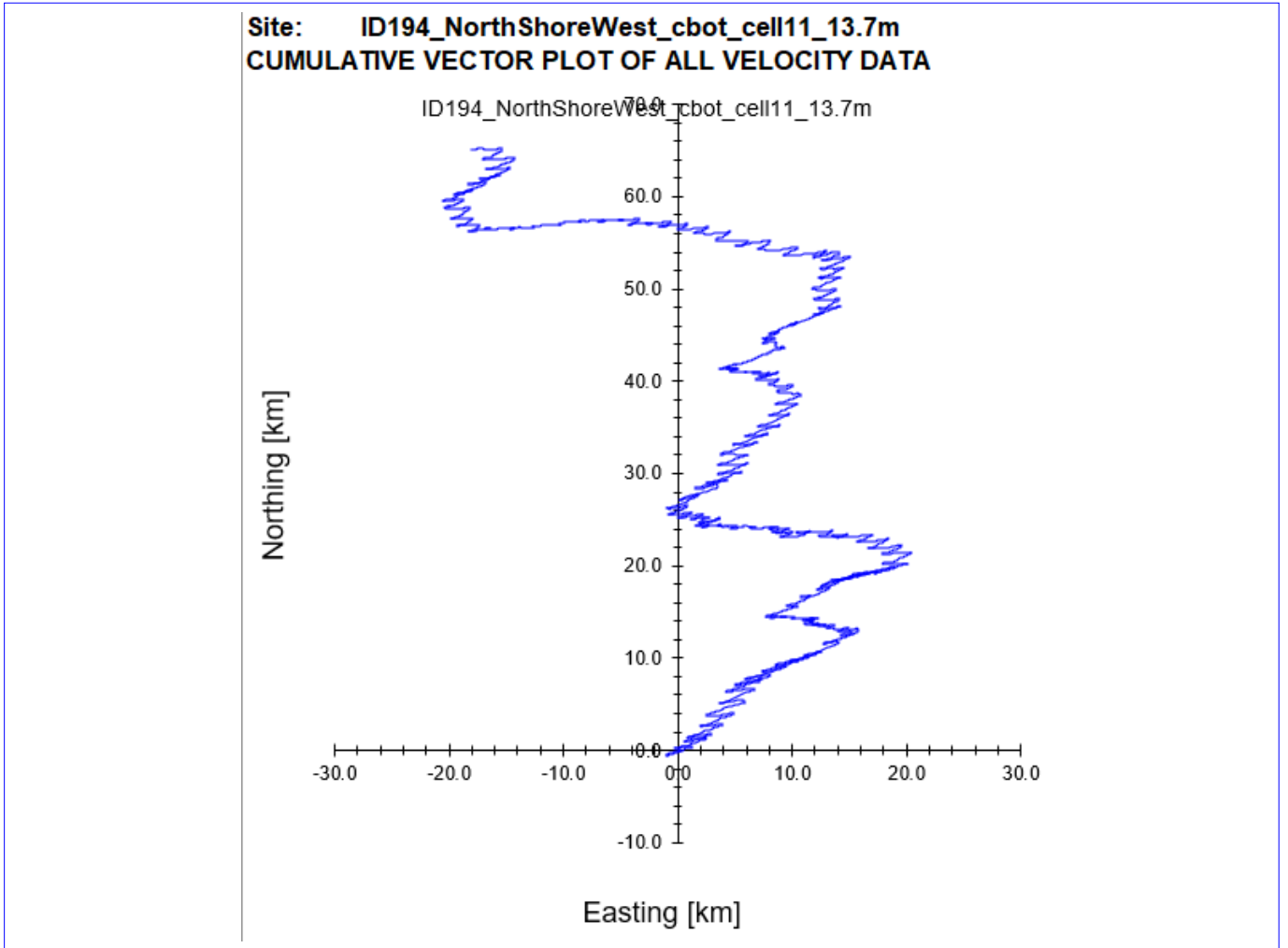


Figure 8. Cumulative Vector Plot of all velocity data from cage bottom cell for ID194.

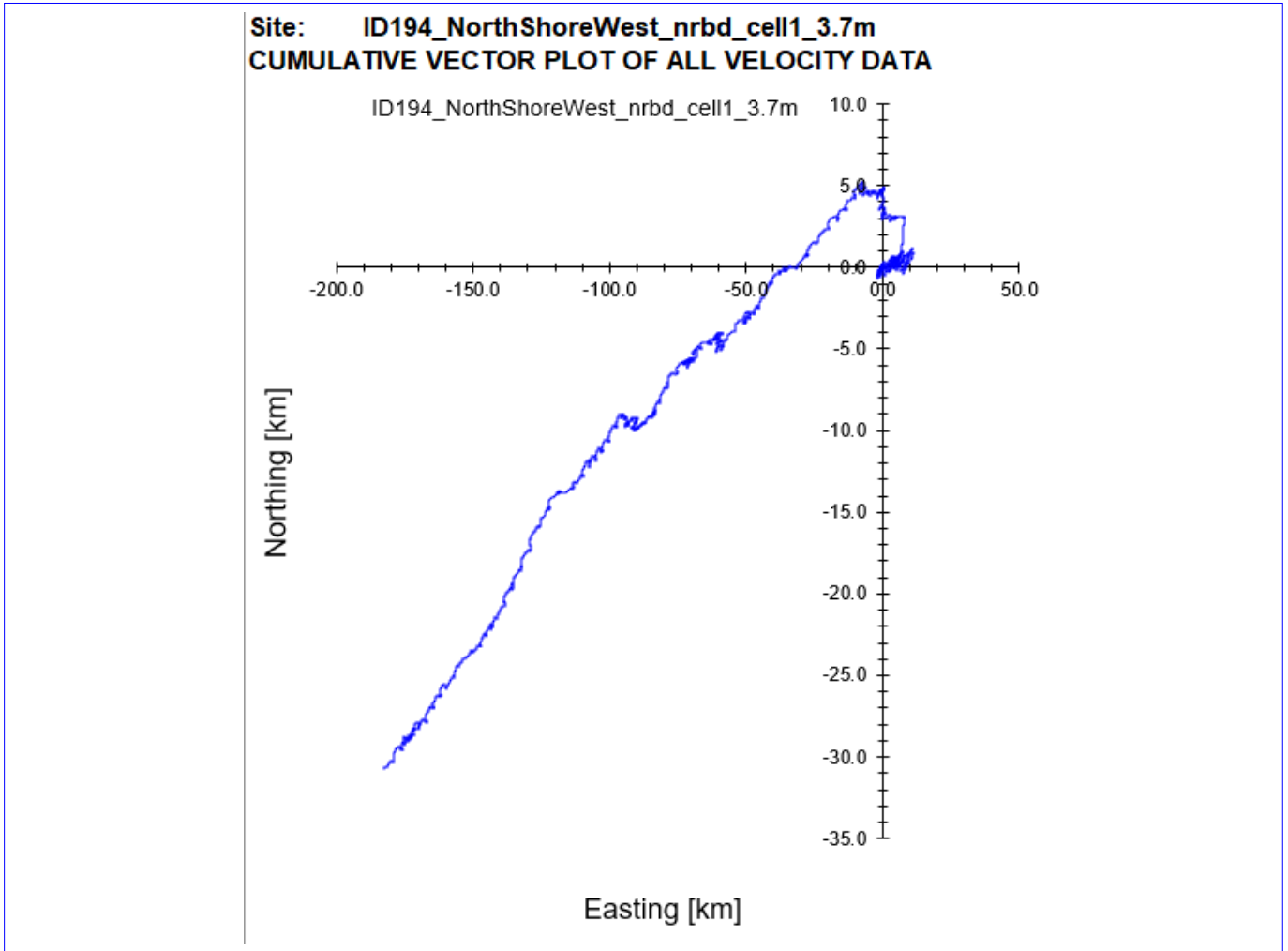


Figure 9. Cumulative Vector Plot of all velocity data from near bottom cell for ID194.



## 5. Summary of Current Data – ID194

Site Name: North Shore West  
 Data start date: 27/02/2018  
 Data end date: 01/05/2018  
 Mean Water Depth: 26.53 m

Table 2. Summary of current meter deployment

	Cell	Depth Below Surface (m)	Distance from Seabed (m)	Mean current speed (cm/s)
Near surface:	18	3.09	20.7	9.74
Cage bottom:	11	10.09	13.7	8.72
Near bed:	1	20.09	3.7	8.05
Average current speed:				8.84

Table 3. Ranked percentiles for current speed at all three depths

Cell	Ranked Percentile (%) for mean speed	≤3cm/s (%)	≥4.5cm/s (%)	≥9.5cm/s (%)
Near surface:	59	14	75	42
Cage bottom:	57	16	72	39
Near bed:	58	18	69	34

Table 4. Major axis

Cell	Major Axis (Deg-G)
Near surface:	070
Cage Bottom:	255
Near bed:	260

Table 5. Mean and residual currents

Cell	Residual Speed (m/s)	Residual Parallel (m/s)	Residual Normal (m/s)	Tidal Amplitude Parallel (m/s)	Tidal Amplitude Normal (m/s)
Near Surface:	0.027	0.027	-0.005	0.159	0.038
Cage Bottom:	0.012	0.000	0.012	0.143	0.033
Near Bed:	0.034	0.034	0.000	0.123	0.035

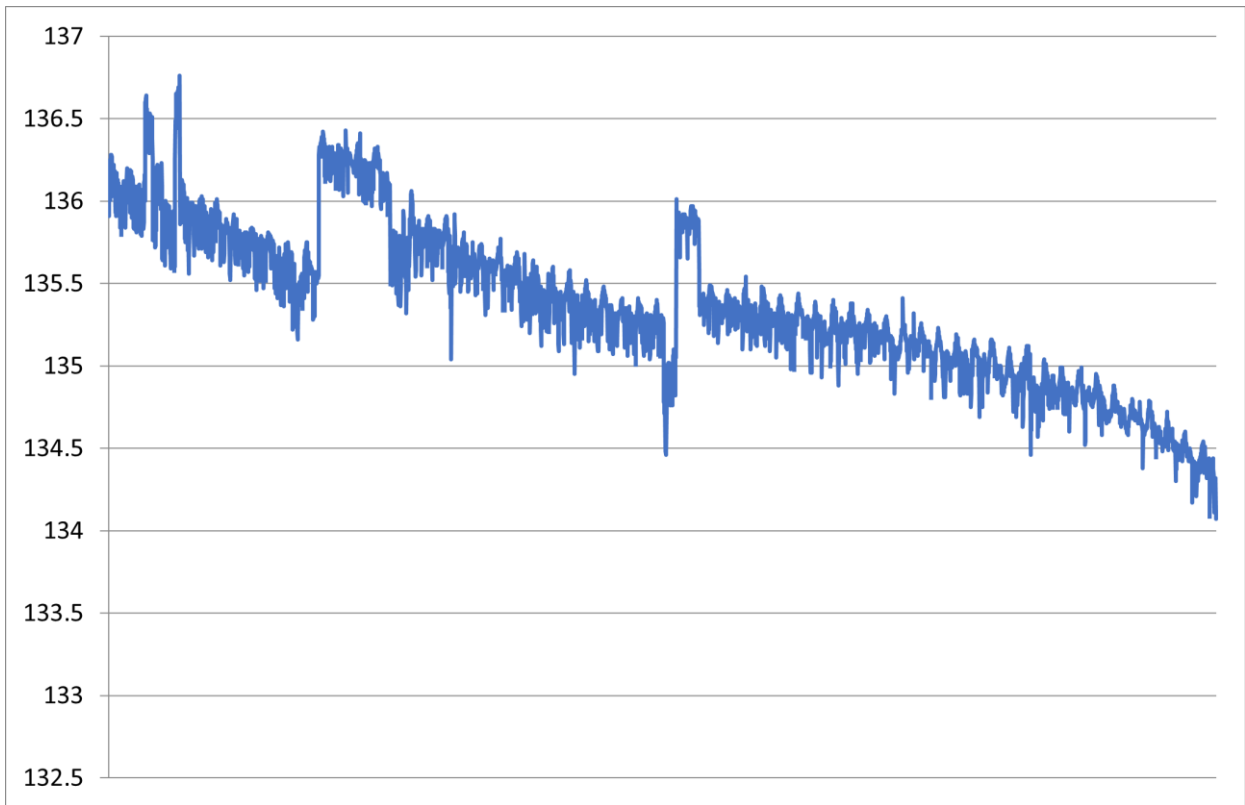


Figure 10. Summary of heading data from deployment ID194.

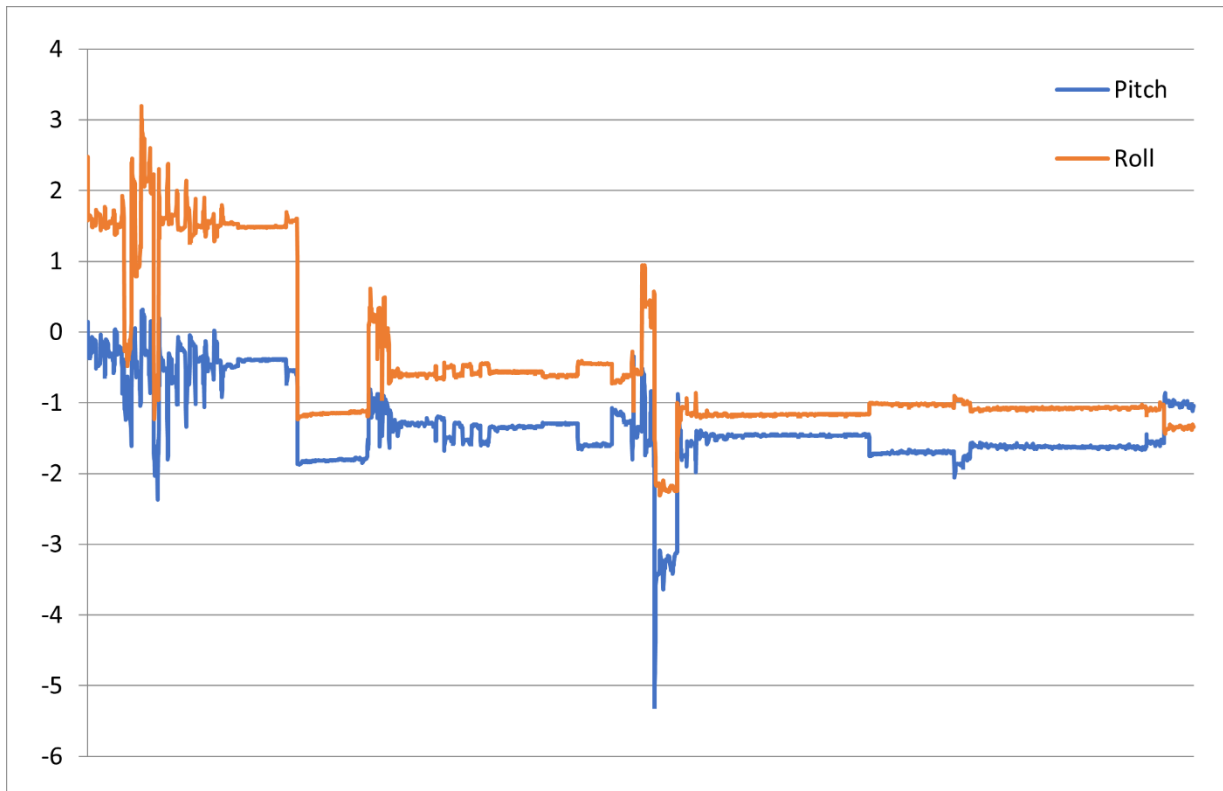


Figure 11. Summary of pitch and roll data from deployment ID194.

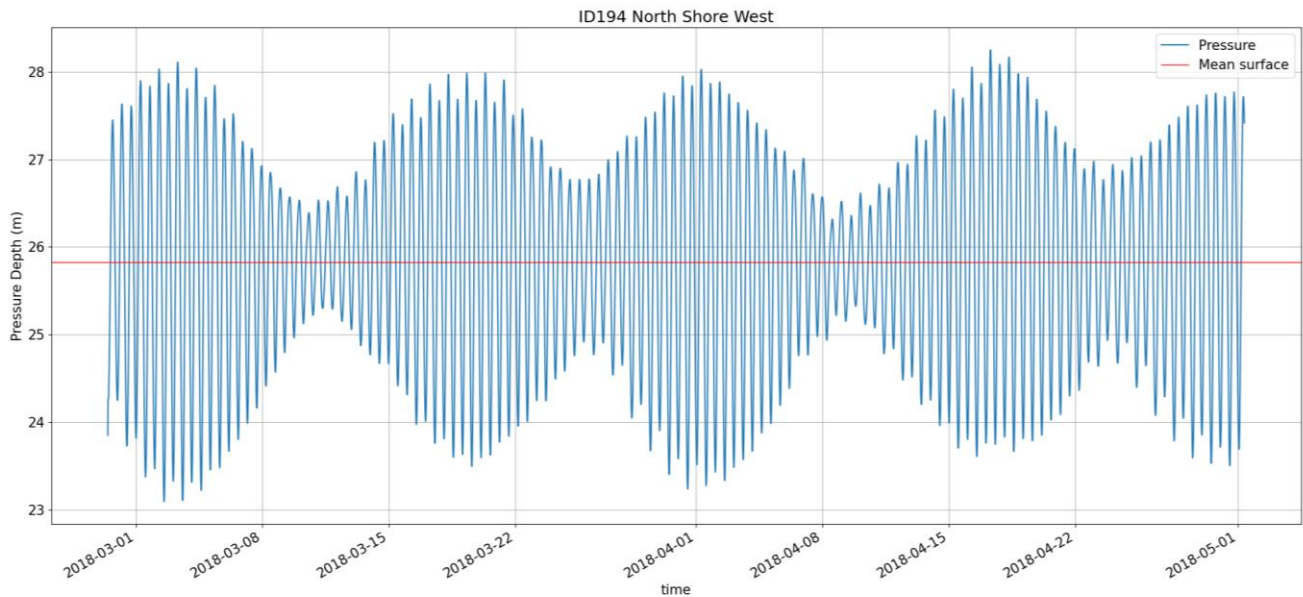


Figure 12. Pressure data from deployment ID194.

## 6. Conclusion

MOWI has collected and analysed current and bathymetric data for the salmon farm at North Shore West. The analysed current data for the 62 day 22 hour period are believed to be reliable and representative of the proposed location. The bathymetric data from the ECLH bathymetry data and the local depth survey provided a coherent bathymetric dataset for the site.

## Annex 1. Survey Equipment Deployment Log

Location:	North Shore West
Nearest tidal port:	Stornoway
Time zone:	UTC
Meter switched on:	10:40 27/01/2018
Meter switched off:	08:40 01/05/2018
Period used for this report:	10:40 27/01/2018 – 08:40 01/05/2018
ADCP serial number:	108
Meter position:	58.11663N, -6.43247W 139060 E 922769 N
Minimum water depth:	23.79 m (23.09 m measured by ADCP + 0.7 m *)
Water depth (Chart Datum):	23.49 m (minimum water depth - 0.3 m tide timetable)
Mean water depth:	26.53 m (25.83 m measured by ADCP + 0.7 m *)
Depth of meter from surface:	22.79 m (below chart datum to transducer)
Height of meter from seabed:	0.7 m to transducer head
Sounding at deployment:	23 m @ 10:40 on 27/02/2018

Table A1. ADCP meter settings:

Reference:	Transducer
Bin size (m):	1.0
Dist to 1 <sup>st</sup> bin (m):	3
Number of bins:	45
Frequency (kHz):	307
Recording interval (mins):	20
No. pings per ensemble:	300
Magnetic correction:	0
Ensemble:	300
Standard Deviation (cm/sec):	0.63
Time/Ping (seconds):	2