



## ANDERSON MARINE SURVEYS

---

**Report To: Scottish Sea Farms**

**Issued By: SJA**

**Date: 17 July 2023**

---

### Billy Baa seabed video survey

A seabed video survey was carried out in July 2023 in the vicinity of the proposed Billy Baa pen site, northwest of Scalloway, Shetland (Figure 1). Objectives of the survey were to identify the principal habitats and any Priority Marine Features<sup>1</sup> (PMFs), specifically the presence of horse mussels *Modiolus modiolus*; to recommend baseline sampling stations representative of habitats and to assess the ecological condition of the seabed in the vicinity of the site.

Seabed video was collected along five primary transects T1 – T5 (Figure 2): with an extension (T2-e) subsequently added to the south end of T2. An additional four transects (opt 1 – opt 4) were collected transversely to the north of the proposed pen group location and 23 drop-down stations to the south, in areas where occurrence of *Modiolus* was anticipated.

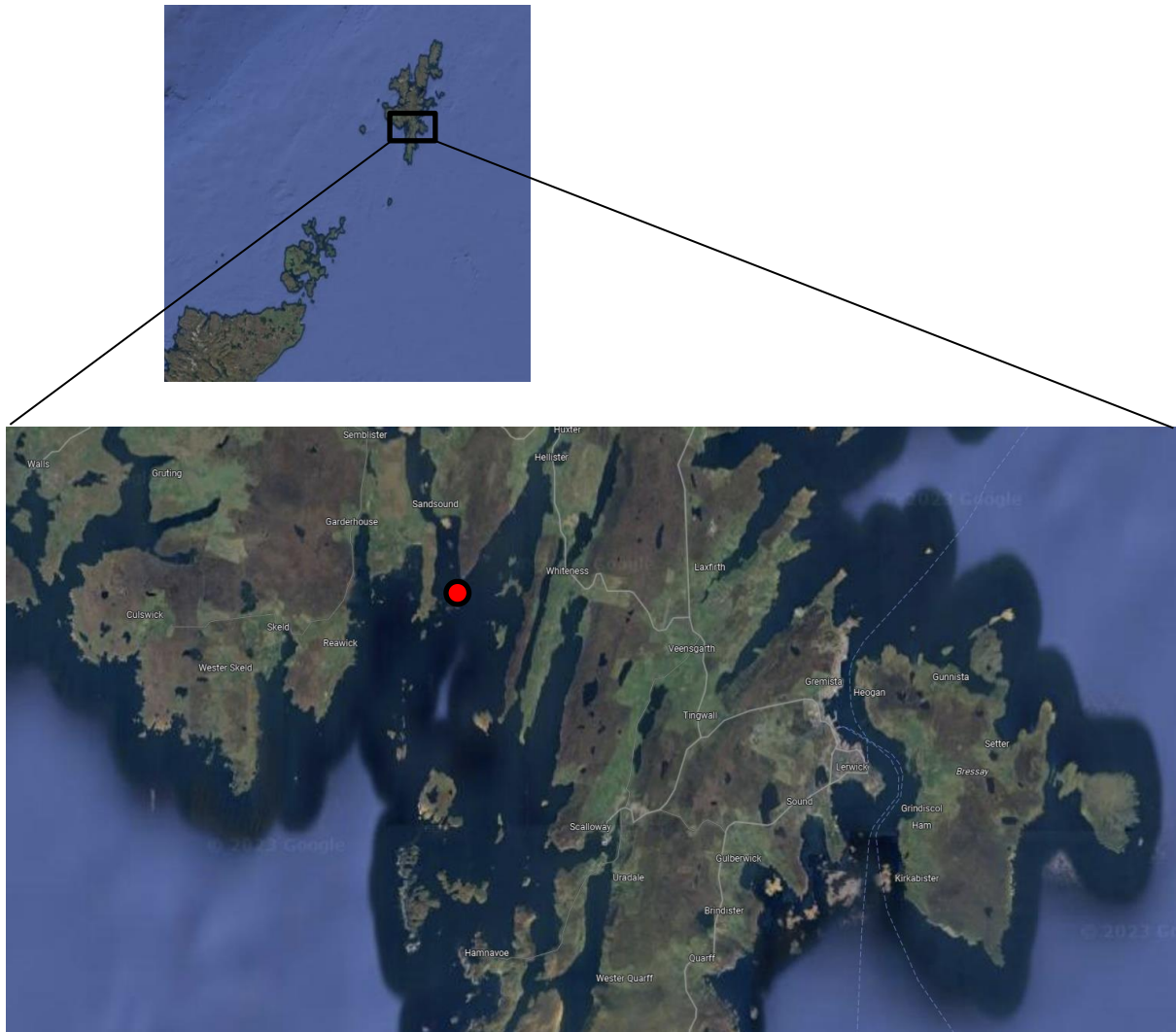
Video survey of defined transects was carried out using a camera frame fitted with a Bowtech DIVECAM-550C-AL-I4 camera, GoPro video camera and two high intensity LED lights. The system was also equipped with two parallel laser pointers at 20cm separation. The camera frame was towed along a pre-determined transect line at approximately 0.5 knots just above the seabed and allowed to settle briefly on the seabed at frequent intervals.

Site descriptor, position, time (UTC), elapsed time and depth overlays were added to the video post-survey, and deployment and recovery periods edited from the final video files in mp4 format.

Video footage has been examined and interpreted in 2-minute segments, apart from longer transects (T2, T3, T4) which were assessed in 5-minute segments. Fauna was identified using standard sources (primarily Southward and Campbell 2006, Naylor 2011, Porter 2012, Wood 2013, Hayward and Ryland 2017, Bowen et al. 2018). Still images of representative views were captured from the video and are shown in Figure 3 (51 alternate stills are included for brevity, the full set of 78 stills is included with the video files in digital format).

---

<sup>1</sup> As defined by Tyler-Walters et al 2016.



**Figure 1. Billy Baa general location (red)**

Habitats, presence of *Modiolus*, observed epifaunal species and contamination assessment (primarily indicated by mat-forming filamentous bacteria *Beggiatoa*), are summarised below. Representative still images are shown in Figure 3.

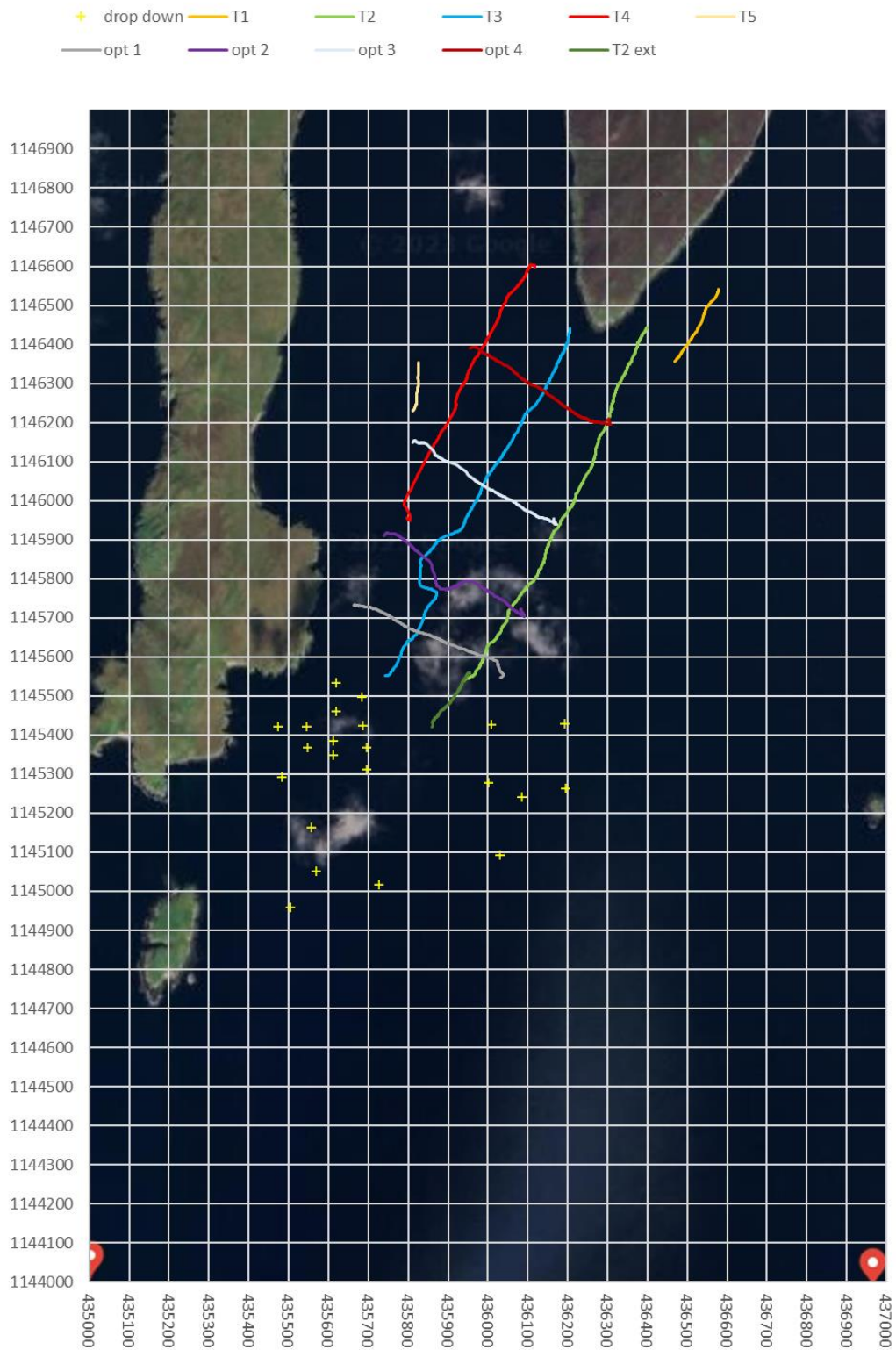


Figure 2. Billy Baa seabed video tracks

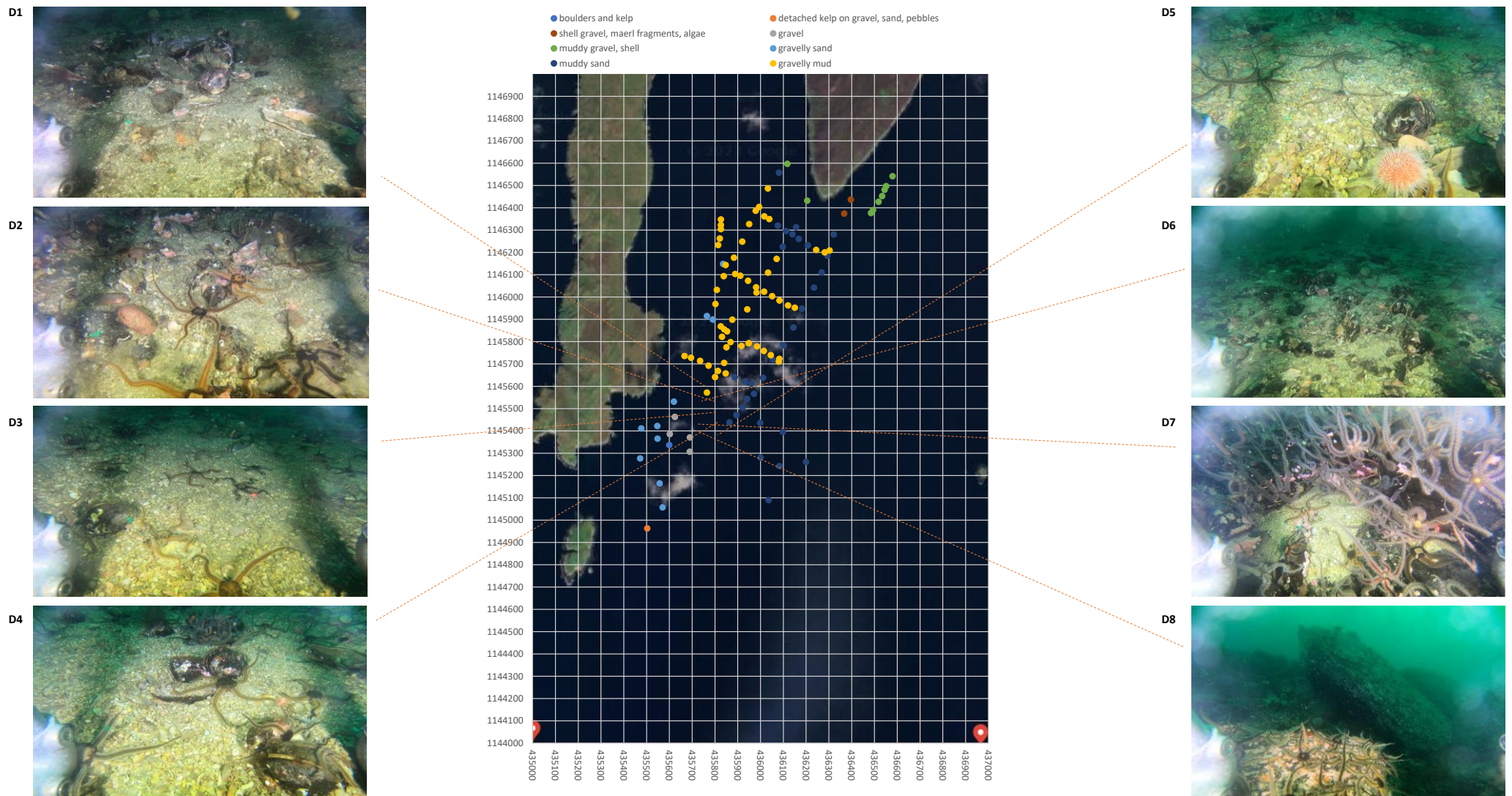
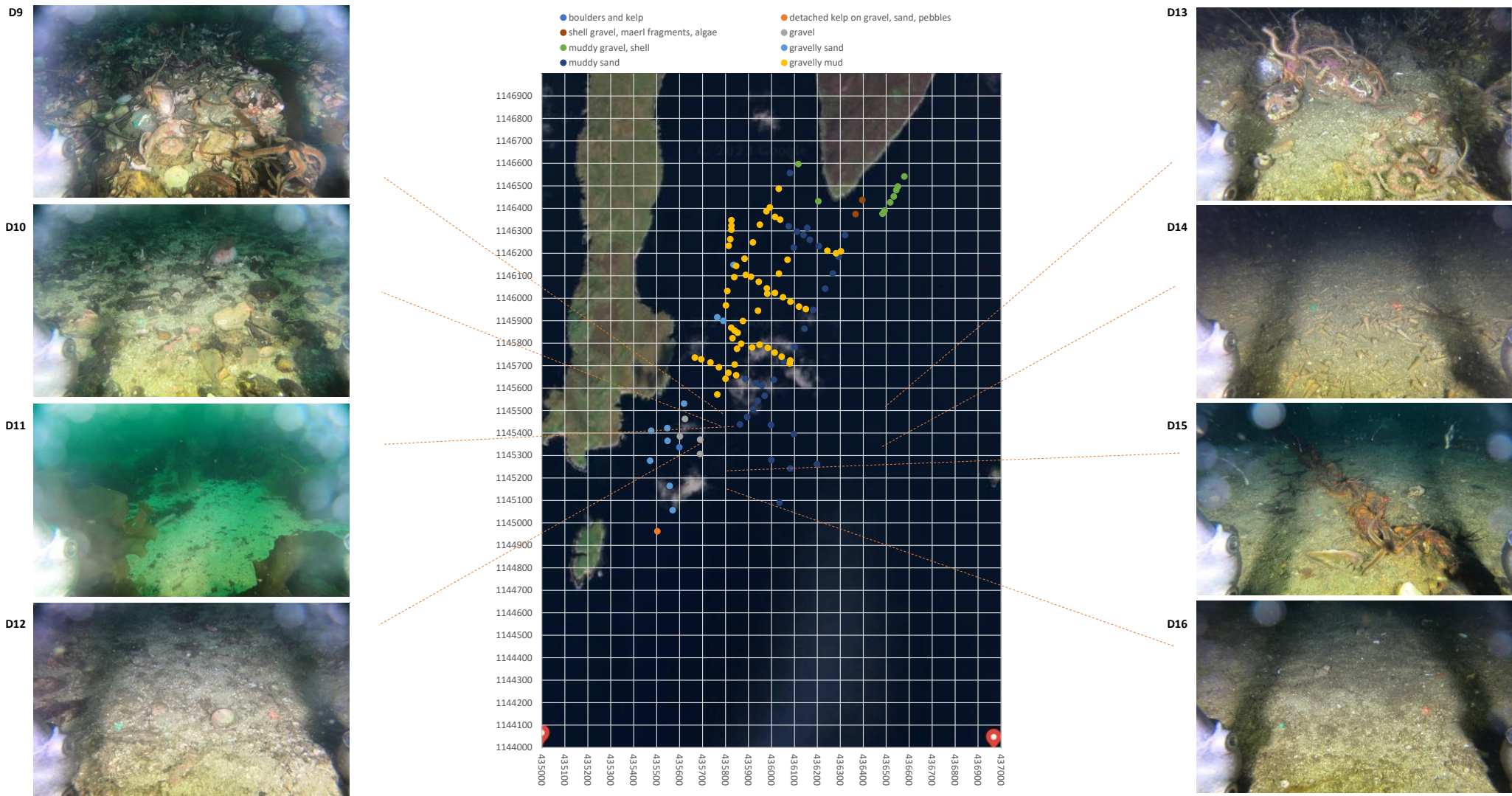
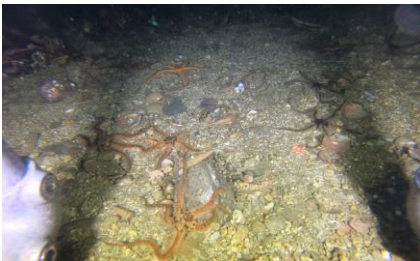


Figure 3. Representative habitat stills 1-8



**Figure 3. Representative habitat stills 9-16**

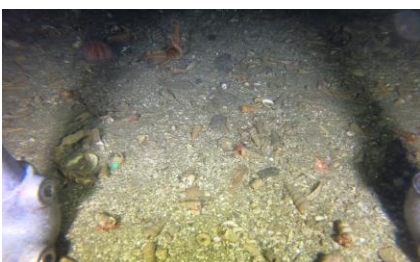
D17



D18



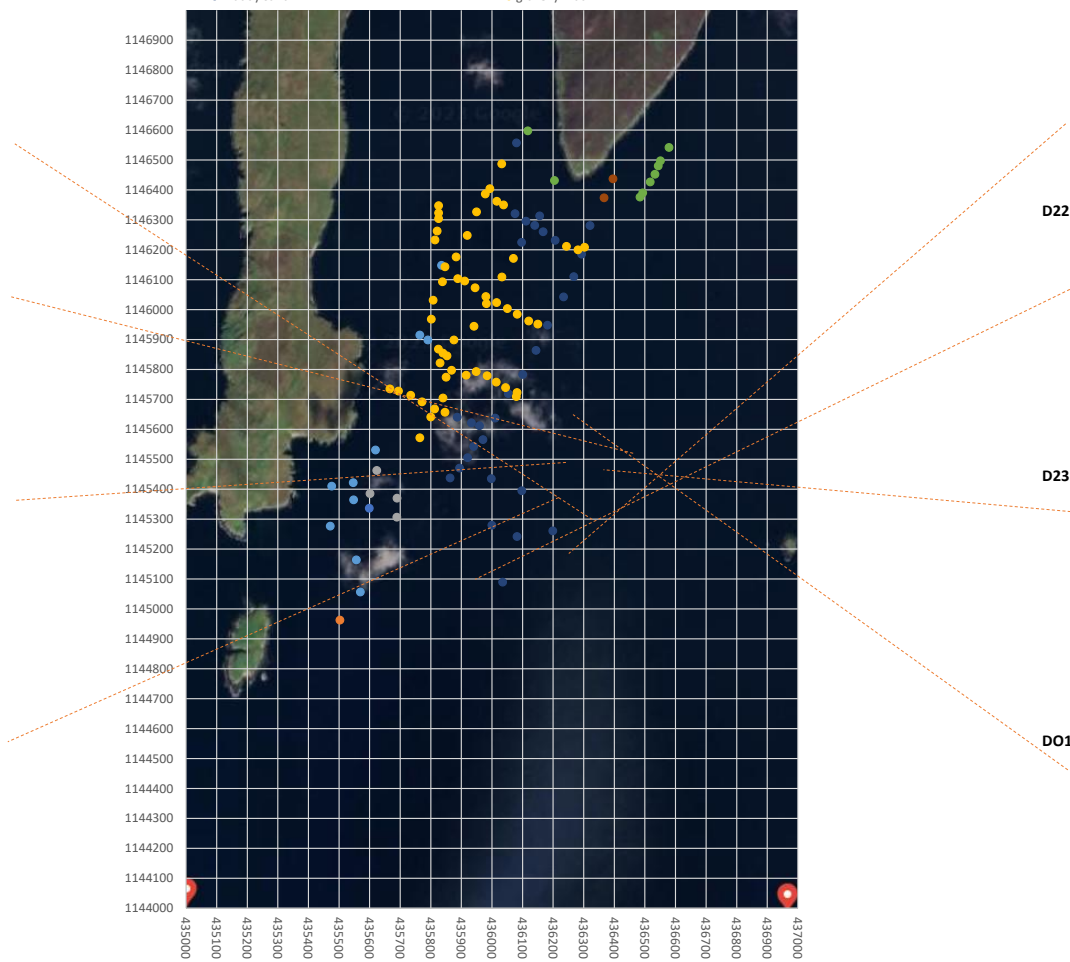
D19



D20



- boulders and kelp
- shell gravel, maerl fragments, algae
- muddy gravel, shell
- muddy sand
- detached kelp on gravel, sand, pebbles
- gravel
- gravelly sand
- gravelly mud



D21



D22



D23



DO1-1



Figure 3. Representative habitat stills 17-24

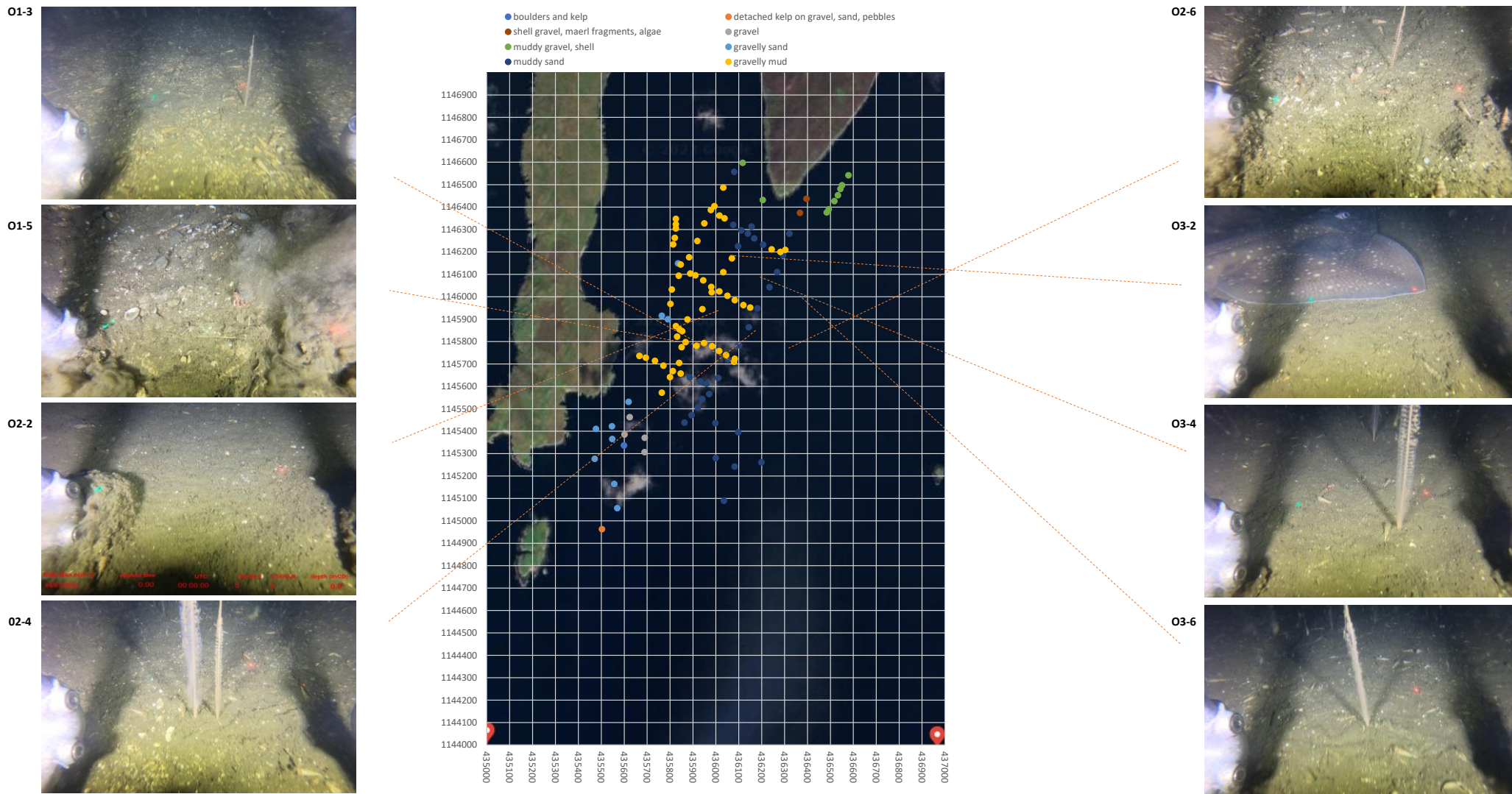
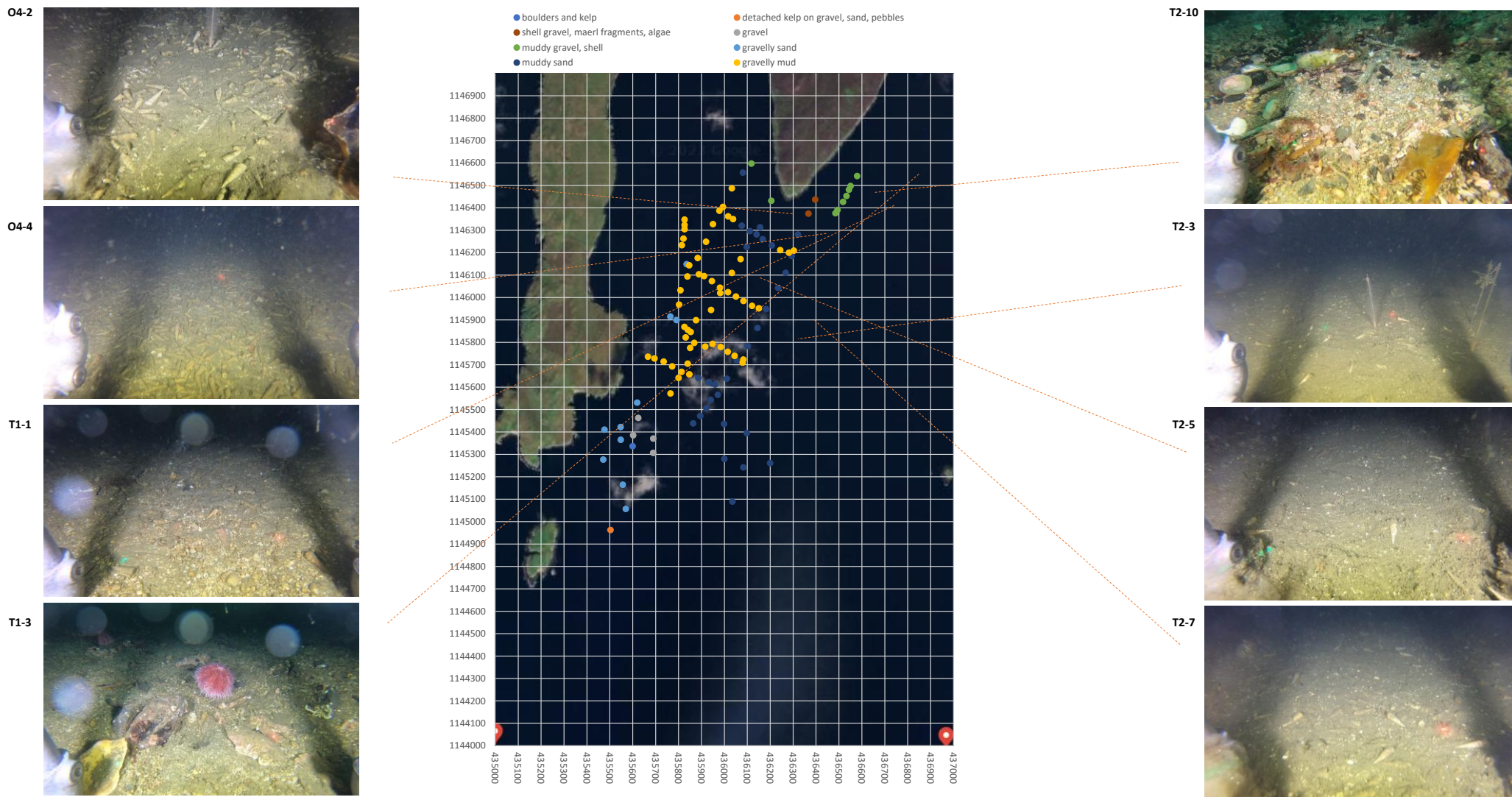
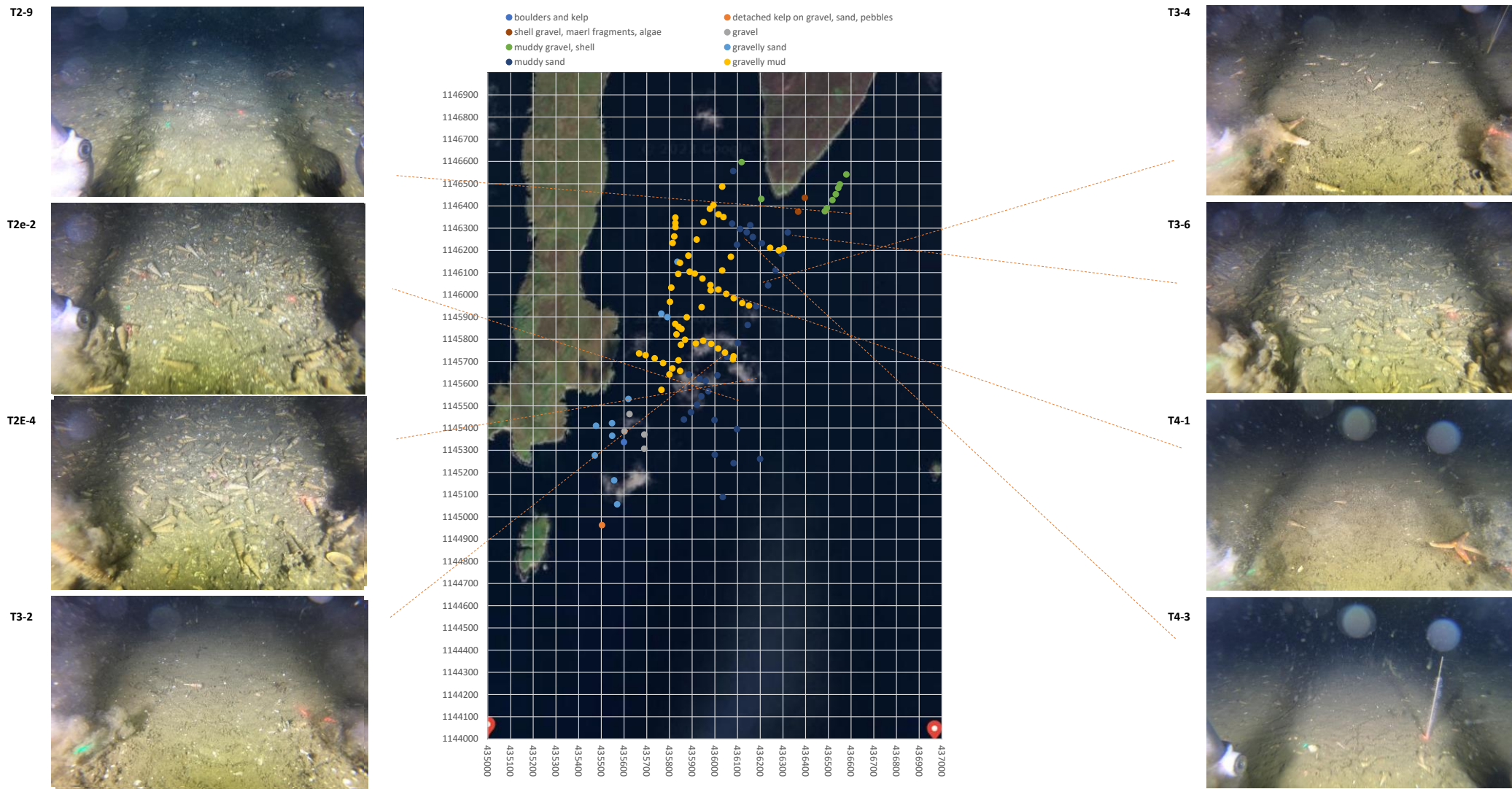


Figure 3. Representative habitat stills 25-32



**Figure 3. Representative habitat stills 33-40**





**Figure 3. Representative habitat stills 41-48**

T4-5



T5-1



T5-3

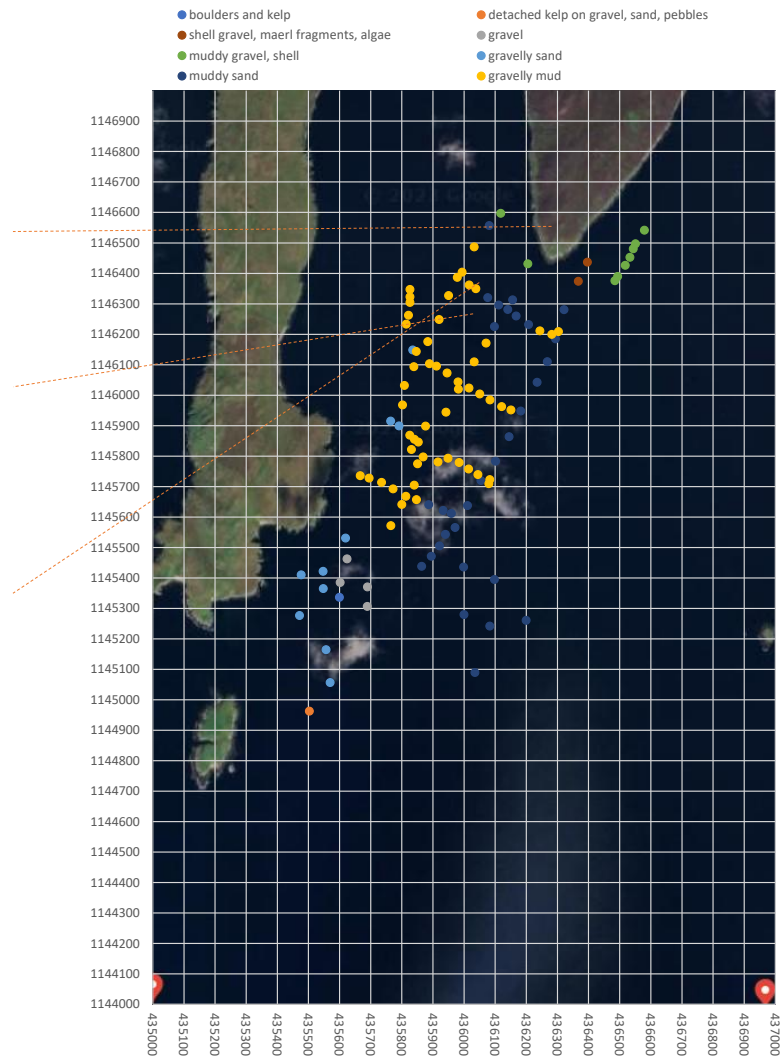
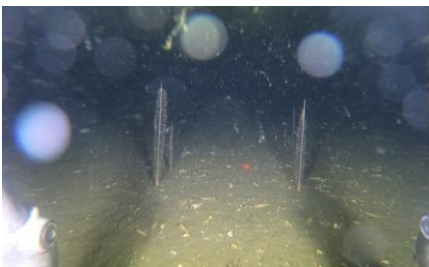


Figure 3. Representative habitat stills 49-51

T1 elapsed time	Depth (mCD)		
1-120 s	33.02 - 31.05 m	Modiolus	muddy gravel, shell
121-240 s	31.05 - 30.25 m	Modiolus	muddy gravel, shell
241-360 s	30.25 - 29.75 m	Modiolus	muddy gravel, shell
361-480 s	29.75 - 28.37 m	Modiolus	muddy gravel, shell
481-600 s	28.37 - 26.47 m	Modiolus	muddy gravel, shell
601-720 s	26.47 - 26.99 m	Modiolus	muddy gravel, shell
721-840 s	26.99 - 26.29 m	Modiolus	muddy gravel, shell
1-120 s	33.02 - 31.05 m	Modiolus	muddy gravel, shell
121-240 s	31.05 - 30.25 m	Modiolus	muddy gravel, shell
241-360 s	30.25 - 29.75 m	Modiolus	muddy gravel, shell
361-480 s	29.75 - 28.37 m	Modiolus	muddy gravel, shell
481-600 s	28.37 - 26.47 m	Modiolus	muddy gravel, shell
601-720 s	26.47 - 26.99 m	Modiolus	muddy gravel, shell
721-840 s	26.99 - 26.29 m	Modiolus	muddy gravel, shell

T2 elapsed time	Depth (mCD)		
1-300 s	43.58 - 43.57 m		muddy sand, Turritella shell hash, Virgularia
301-600 s	43.57 - 44.26 m		muddy sand, Turritella shell hash
601-900 s	44.26 - 44.25 m		muddy sand, Turritella shell hash, Virgularia
901-1200 s	44.25 - 44.44 m		muddy sand, Turritella shell hash, Virgularia
1201-1500 s	44.44 - 44.53 m		muddy sand, Turritella shell hash, Virgularia
1501-1800 s	44.53 - 44.62 m		muddy sand, Turritella shell hash, Virgularia
1801-2100 s	44.62 - 44.11 m		muddy sand, Turritella shell hash
2101-2400 s	44.11 - 43.81 m		muddy sand, Turritella shell hash, Virgularia
2401-2700 s	43.81 - 43.2 m		muddy sand, Turritella shell hash, Virgularia
2701-3000 s	43.2 - 32.89 m	Modiolus	muddy sand, Turritella shell hash, Virgularia
3001-3300 s	32.89 - 15.19 m		shell gravel, maerl fragments, algae
3301-3600 s	15.19 - 13.99 m		shell gravel, maerl fragments, algae
1-300 s	43.58 - 43.57 m		muddy sand, Turritella shell hash, Virgularia
301-600 s	43.57 - 44.26 m		muddy sand, Turritella shell hash
601-900 s	44.26 - 44.25 m		muddy sand, Turritella shell hash, Virgularia
901-1200 s	44.25 - 44.44 m		muddy sand, Turritella shell hash, Virgularia
1201-1500 s	44.44 - 44.53 m		muddy sand, Turritella shell hash, Virgularia
1501-1800 s	44.53 - 44.62 m		muddy sand, Turritella shell hash, Virgularia
1801-2100 s	44.62 - 44.11 m		muddy sand, Turritella shell hash
2101-2400 s	44.11 - 43.81 m		muddy sand, Turritella shell hash, Virgularia
2401-2700 s	43.81 - 43.2 m		muddy sand, Turritella shell hash, Virgularia
2701-3000 s	43.2 - 32.89 m	Modiolus	muddy sand, Turritella shell hash, Virgularia
3001-3300 s	32.89 - 15.19 m		shell gravel, maerl fragments, algae
3301-3600 s	15.19 - 13.99 m		shell gravel, maerl fragments, algae
1-300 s	43.58 - 43.57 m		muddy sand, Turritella shell hash, Virgularia

T2-ext elapsed time	Depth (mCD)		
1-120 s	44.48 - 43.76 m		muddy sand, Turritella shell hash
121-240 s	43.76 - 43.26 m		muddy sand, Turritella shell hash
241-360 s	43.26 - 43.56 m		muddy sand, Turritella shell hash
361-480 s	43.56 - 43.75 m		muddy sand, Turritella shell hash, Virgularia
481-600 s	43.75 - 43.55 m		muddy sand, Turritella shell hash, Virgularia

T3 elapsed time	Depth (mCD)		
1-300 s	33.16 - 40.66 m	Modiolus	gravelly mud, shell
301-600 s	40.66 - 42.17 m		gravelly mud, shell
601-900 s	42.17 - 41.97 m		gravelly mud, shell
901-1200 s	41.97 - 41.17 m		gravelly mud, shell, Virgularia
1201-1500 s	41.17 - 41.17 m		gravelly mud, shell, Virgularia
1501-1800 s	41.17 - 41.48 m		gravelly mud, shell, Virgularia
1801-2100 s	41.48 - 41.38 m		gravelly mud, shell, Virgularia
2101-2400 s	41.38 - 41.39 m		gravelly mud, shell, Virgularia
2401-2700 s	41.39 - 41.7 m		gravelly mud, shell, Virgularia
2701-3000 s	41.7 - 42.41 m		gravelly mud, shell, Virgularia
3001-3300 s	42.41 - 38.31 m		muddy sand, Turritella shell hash
3301-3600 s	38.31 - 24.03 m		muddy sand, Turritella shell hash
3601-3900 s	24.03 - 12.33 m	Modiolus	muddy gravel, shell

T4 elapsed time	Depth (mCD)		
1-300 s	41.19 - 39.51 m		gravelly mud, shell
301-600 s	39.51 - 40.32 m		gravelly mud, shell
601-900 s	40.32 - 39.64 m		gravelly mud, shell
901-1200 s	39.64 - 39.36 m		gravelly mud, shell
1201-1500 s	39.36 - 39.38 m		gravelly mud, shell, Virgularia
1501-1800 s	39.38 - 39.3 m		gravelly mud, shell, Virgularia
1801-2100 s	39.3 - 38.62 m		gravelly mud, shell, Virgularia
2101-2400 s	38.62 - 35.54 m		gravelly mud, shell, Virgularia
2401-2700 s	35.54 - 27.96 m		muddy sand, Turritella shell hash
2701-3000 s	27.96 - 24.06 m	Modiolus	muddy gravel, shell

T5 elapsed time	Depth (mCD)		
1-120 s	38.66 - 38.48 m		gravelly mud, shell
121-240 s	38.48 - 38.28 m		gravelly mud, shell
241-360 s	38.28 - 38.18 m		gravelly mud, shell
361-480 s	38.18 - 38.11 m		gravelly mud, shell
481-600 s	38.11 - 38.01 m		gravelly mud, shell, Virgularia

Drops (in order acquired)	Depth (mCD)		
D1	15.8 - 19 m	Modiolus	gravelly sand, shell
D2	22.42 - 23.22 m	Modiolus	gravelly sand, shell, pebbles
D3	18.12 - 20.34 m	Modiolus	gravelly sand, shell, pebbles
D4	15.74 - 18.96 m	Modiolus	gravel
D5	15.86 - 17.76 m	Modiolus	gravel
D6	19.58 - 20.4 m	Modiolus	gravel
D7	12.1 - 17.9 m		gravel and boulders
D8	11.11 - 13.71 m		boulders and kelp
D9	16.48 - 17.56 m	Modiolus	gravelly sand, shell
D10	18.79 - 19.19 m	Modiolus	gravelly sand, shell
D11	14.5 - 15.2 m		gravelly sand, kelp
D12	19.52 - 20.12 m		gravelly sand, shell
D13	35.66 - 39.06 m	Modiolus	gravelly sand, shell, pebbles
D14	40.06 - 40.66 m		muddy sand, Turritella shell hash
D19	31.25 - 36.05 m	Modiolus	muddy sand, Turritella shell hash
D20	33.94 - 34.34 m		muddy sand, Turritella shell hash
D21	31.73 - 32.23 m	Modiolus	muddy sand, Turritella shell hash
D17	31.73 - 33.72 m	Modiolus	muddy sand, Turritella shell hash
D23	27.11 - 29.71 m	Modiolus	muddy sand, Turritella shell hash
D15	24.66 - 25.96 m		gravelly sand, shell
D16	27.85 - 28.33 m		gravelly sand, shell
D18	30.92 - 31.52 m	Modiolus	detached kelp on gravel, sand, pebbles
D22	22.89 - 25.69 m	Modiolus	gravelly sand, shell, pebbles

Opt 1 elapsed time	Depth (mCD)		
1-120 s	39.94 - 42.14 m	Modiolus	gravelly sand, shell, pebbles
121-240 s	42.14 - 43.83 m		gravelly sand, shell, pebbles
241-360 s	43.83 - 43.93 m		muddy sand, Turritella shell hash, Virgularia
361-480 s	43.93 - 43.41 m		muddy sand, Turritella shell hash, Virgularia
481-600 s	43.41 - 43.01 m		muddy sand, Turritella shell hash, Virgularia
601-720 s	43.01 - 42.71 m		gravelly mud, shell
721-840 s	42.71 - 41.89 m		gravelly mud, shell
841-960 s	41.89 - 38.69 m		gravelly mud, shell
961-1080 s	38.69 - 31.18 m		gravelly mud, shell
1081-1200 s	31.18 - 20.98 m		gravelly mud, shell
1201-1320 s	20.98 - 19.58 m		gravelly mud, shell

Opt 2 elapsed time	Depth (mCD)		
1-120 s	35.26 - 40.16 m		gravelly sand, shell
121-240 s	40.16 - 41.14 m		gravelly sand, shell
241-360 s	41.14 - 41.64 m		gravelly mud, shell
361-480 s	41.64 - 42.03 m		gravelly mud, shell
481-600 s	42.03 - 42.13 m		gravelly mud, shell, Virgularia
601-720 s	42.13 - 42.33 m		gravelly mud, shell, Virgularia
721-840 s	42.33 - 42.51 m		gravelly mud, shell, Virgularia
841-960 s	42.51 - 43.01 m		gravelly mud, shell, Virgularia
961-1080 s	43.01 - 43.49 m		gravelly mud, shell, Virgularia
1081-1200 s	43.49 - 43.89 m		gravelly mud, shell, Virgularia
1201-1320 s	43.89 - 44.49 m		gravelly mud, shell, Virgularia
1321-1440 s	44.49 - 45.08 m		gravelly mud, shell, Virgularia
1441-1560 s	45.08 - 44.78 m		gravelly mud, shell, Virgularia

Opt 3 elapsed time	Depth (mCD)		
1-120 s	40.23 - 40.63 m		gravelly sand, shell
121-240 s	40.63 - 40.91 m		gravelly mud, shell
241-360 s	40.91 - 41.21 m		gravelly mud, shell, Virgularia
361-480 s	41.21 - 41.39 m		gravelly mud, shell, Virgularia
481-600 s	41.39 - 41.69 m		gravelly mud, shell, Virgularia
601-720 s	41.69 - 41.99 m		gravelly mud, shell, Virgularia
721-840 s	41.99 - 42.58 m		gravelly mud, shell, Virgularia
841-960 s	42.58 - 43.18 m	Modiolus	gravelly mud, shell
961-1080 s	43.18 - 43.76 m		gravelly mud, shell, Virgularia
1081-1200 s	43.76 - 44.36 m		gravelly mud, shell, Virgularia
1201-1320 s	44.36 - 44.76 m		gravelly mud, shell, Virgularia

Opt 4 elapsed time	Depth (mCD)		
1-120 s	39.73 - 40.51 m		gravelly mud, shell, Virgularia
121-240 s	40.51 - 41.21 m		gravelly mud, shell, Virgularia
241-360 s	41.21 - 41.91 m		gravelly mud, shell, Virgularia
361-480 s	41.91 - 42.1 m		muddy sand, Turritella shell hash
481-600 s	42.1 - 40.6 m		muddy sand, Turritella shell hash
601-720 s	40.6 - 41.28 m		muddy sand, Turritella shell hash
721-840 s	41.28 - 43.08 m		muddy sand, Turritella shell hash
841-960 s	43.08 - 43.78 m		muddy sand, Turritella shell hash
961-1080 s	43.78 - 43.87 m		gravelly mud, shell, Virgularia
1081-1200 s	43.87 - 43.97 m		gravelly mud, shell, Virgularia
1201-1320 s	43.97 - 43.87 m		gravelly mud, shell, Virgularia

**Table 1. Habitats, observed epifaunal species and contamination assessment from seabed video**

A total of thirteen habitats were distinguished (Table 2), although in some cases these grade into each other and determining boundaries is necessarily subjective. Of these habitats, seven were considered suitable for sampling with a small Van Veen grab, and six were considered unlikely to provide adequate samples. The seven habitats suitable for sampling were further grouped into three categories on the basis of substrate only: gravelly mud, gravelly sand and muddy sand.

	habitat	Transect / drop
1	boulders and kelp	D8
2	detached kelp on gravel, sand, pebbles	D18
3	gravel	D4, D5, D6
4	gravel and boulders	D7
5*	gravelly mud, shell	T3, T4, T5, opt1, opt3
6*	gravelly mud, shell, Virgularia	T3, T4, T5, opt2, opt3, opt4
7*	gravelly sand, kelp	D11
8*	gravelly sand, shell	D1, D9, D10, D12, D15, D16, opt2, opt3
9*	gravelly sand, shell, pebbles	D2, D3, D13, D22, opt1
10	muddy gravel, shell	T1, T3, T4
11*	muddy sand, Turritella shell hash	T2, T3, D14, D17, D19, D20, D21, D23, opt4, T2-e
12*	muddy sand, Turritella shell hash, Virgularia	T2, opt1, T2-e
13	shell gravel, maerl fragments, algae	T2

**Table 2. Identified habitats (\* suitable for sampling)**

In general, the area had a range of sedimentary habitats, from gravel and boulders to gravelly mud, with reasonably consistent distribution in terms of water depth. With the exception of boulders recorded at D7 and D8, there was no significant rock or boulder habitat.

The horse mussel *Modiolus modiolus* was recorded in 28 of the 120 assessed transect segments or drops. *Modiolus* was recorded in water depths of 12.3 – 43.2 mCD, predominantly to the north and south of the proposed pen group location (Figure 4).

The PMF description for horse mussel beds notes that *Modiolus* occurs in scattered clumps, thin layers or dense raised beds, which can extend up to several hectares in size. Raised beds are formed of horse mussels bound together by a matrix of byssus threads. Silt, organically rich faeces and shells accumulate within the structure and further increase the bed height.

*Modiolus* was recorded at Billy Baa as scattered individuals, with a maximum density estimated as 15 – 20 /m<sup>2</sup> (Figure 5). Whether or not this density represents PMF should be clarified with NatureScot. If so, the relevant PMF is *Modiolus modiolus* beds on open coast circalittoral mixed sediment - SS.SBR.SMus.ModMx.

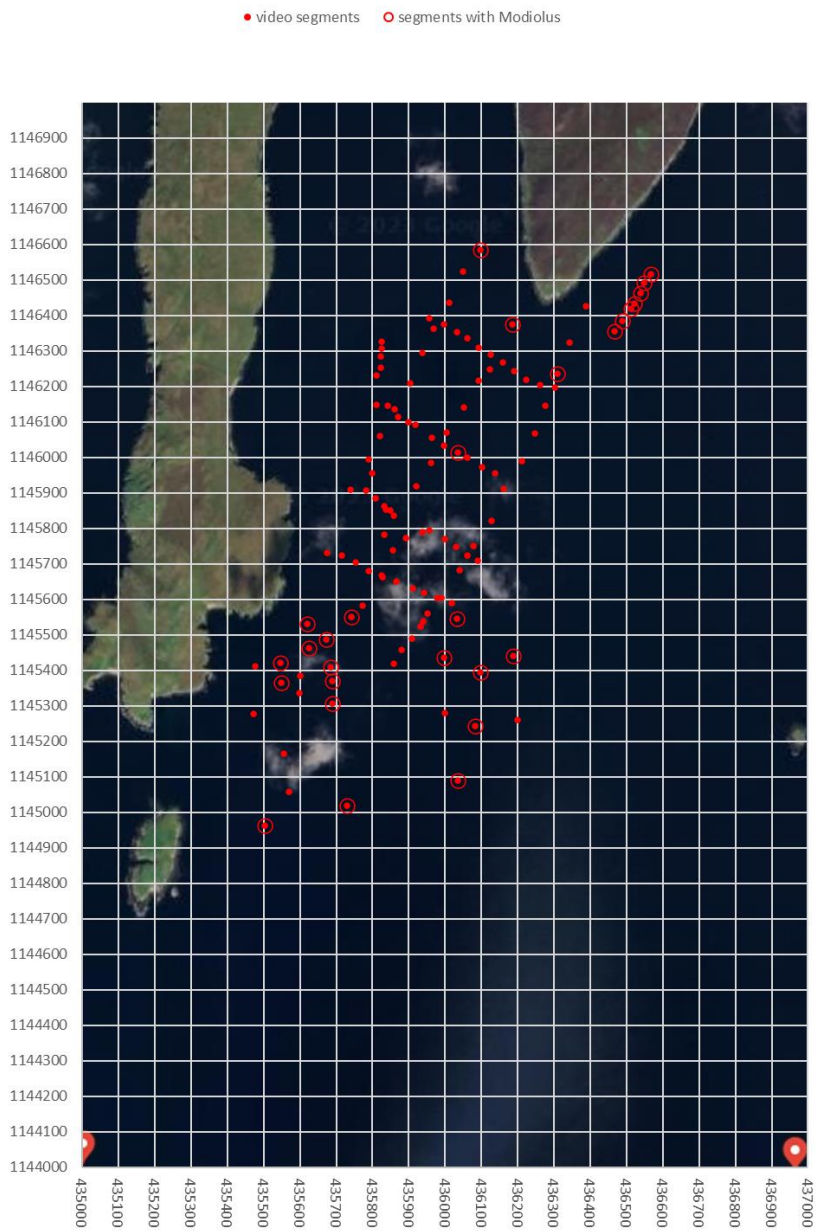


Figure 4. Video segments where *Modiolus* was recorded



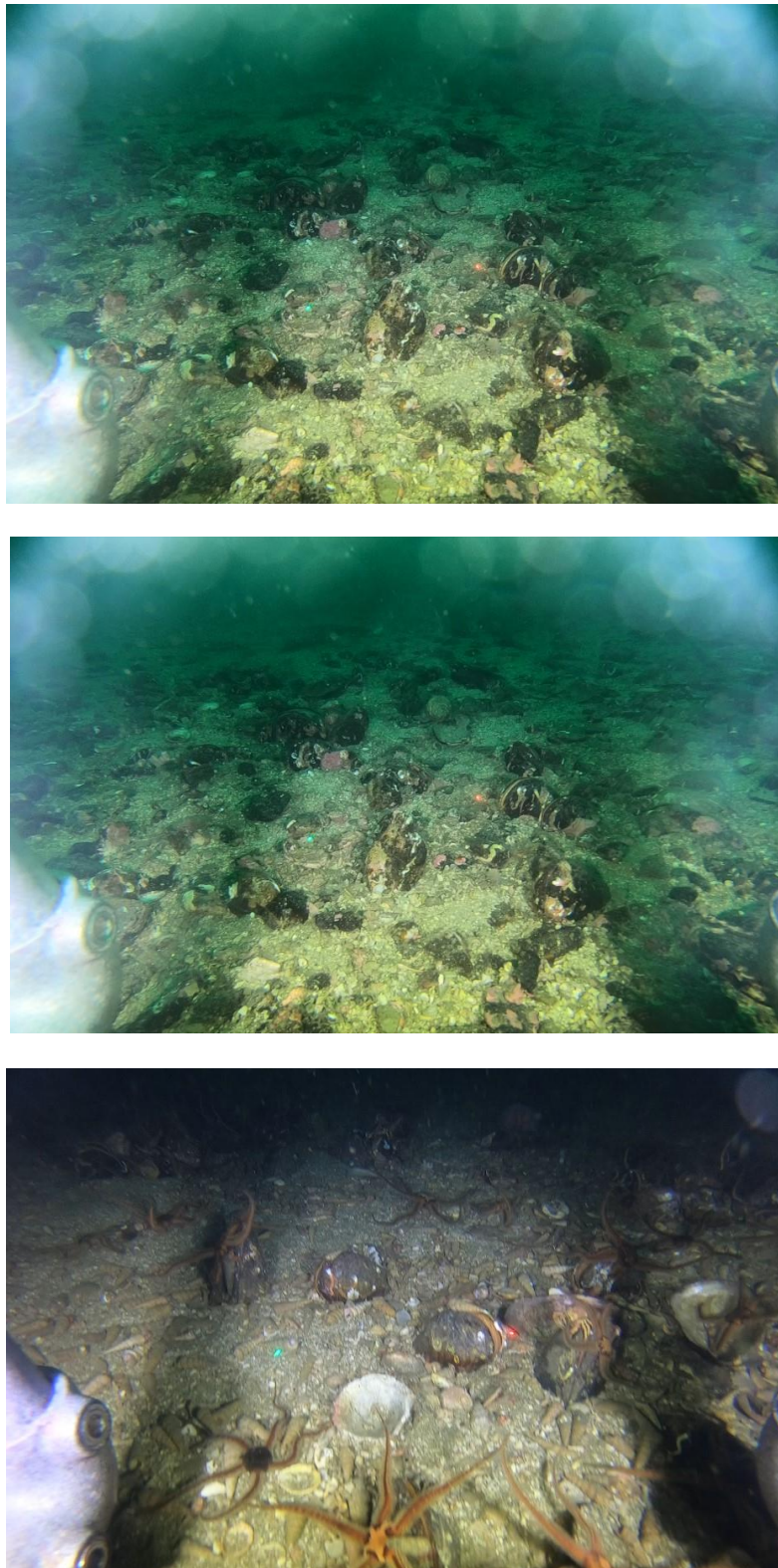


Figure 5. Representative stills of *Modiolus*: D4 (t), D6 (c), D21 (b)

Low or moderate densities of other species associated with PMFs were observed, including maerl fragments at the north end of T2 and the slender seapen *Virgularia mirabilis* on gravelly mud and muddy sand over much of the survey area. However, these records are not considered of sufficiently frequent occurrence to represent PMF.

Brittlestars were also recorded at most locations; these included *Ophiura ophiura* on muddy sand, and dense populations of *Ophiothrix fragilis* and *Ophiocomina nigra* on coarser substrates.

Muddy sand substrate over much of the area was covered with a dense layer of dead *Turritella* shells.

Locations of stills are listed in Table 3.

	Modiolus	habitat	OSGB E	OSGB N	lat	long	Depth (mCD)
D1	Modiolus	gravelly sand, shell	435619	1145534	60.1927	-1.3595	17.3
D2	Modiolus	gravelly sand, shell, pebbles	435683	1145465	60.1920	-1.3584	22.9
D3	Modiolus	gravelly sand, shell, pebbles	435684	1145408	60.1915	-1.3584	18.8
D4	Modiolus	gravel	435686	1145368	60.1912	-1.3583	16.3
D5	Modiolus	gravel	435686	1145302	60.1906	-1.3583	17.5
D6	Modiolus	gravel	435623	1145462	60.1920	-1.3594	19.8
D7		gravel and boulders	435607	1145367	60.1912	-1.3597	12.1
D8		boulders and kelp	435594	1145332	60.1908	-1.3600	13.5
D9	Modiolus	gravelly sand, shell	435546	1145420	60.1916	-1.3608	17.4
D10	Modiolus	gravelly sand, shell	435547	1145364	60.1911	-1.3608	18.9
D11		gravelly sand, kelp	435477	1145411	60.1916	-1.3621	15.1
D12		gravelly sand, shell	435476	1145289	60.1905	-1.3621	19.9
D13	Modiolus	gravelly sand, shell, pebbles	436206	1145455	60.1919	-1.3489	38.8
D14		muddy sand, Turritella shell hash	436193	1145265	60.1902	-1.3492	40.6
D15		gravelly sand, shell	435563	1145153	60.1892	-1.3606	25.1
D16		gravelly sand, shell	435564	1145063	60.1884	-1.3606	28.0
D17	Modiolus	muddy sand, Turritella shell hash	436084	1145235	60.1899	-1.3512	32.0
D18	Modiolus	detached kelp on gravel, sand, pebbles	435488	1144960	60.1875	-1.3620	31.0
D19	Modiolus	muddy sand, Turritella shell hash	436007	1145432	60.1917	-1.3525	35.2
D20		muddy sand, Turritella shell hash	435992	1145299	60.1905	-1.3528	34.2
D21	Modiolus	muddy sand, Turritella shell hash	436016	1145106	60.1888	-1.3524	32.2
D22	Modiolus	gravelly sand, shell, pebbles	435730	1145025	60.1881	-1.3576	23.9
D23	Modiolus	muddy sand, Turritella shell hash	436113	1145396	60.1914	-1.3506	27.9
O1-1	Modiolus	gravelly sand, shell, pebbles	436025	1145586	60.1931	-1.3522	42.0
O1-2		muddy sand, Turritella shell hash, Virgularia	435963	1145611	60.1933	-1.3533	43.9
O1-3		muddy sand, Turritella shell hash, Virgularia	435876	1145646	60.1936	-1.3548	43.1
O1-4		gravelly mud, shell	435773	1145691	60.1941	-1.3567	40.8
O1-5		gravelly mud, shell	435705	1145727	60.1944	-1.3579	28.4
O2-1		gravelly sand, shell	435739	1145910	60.1960	-1.3573	35.5
O2-2		gravelly sand, shell	435805	1145887	60.1958	-1.3561	41.0
O2-3		gravelly mud, shell, Virgularia	435848	1145850	60.1955	-1.3553	42.0

O2-4		gravelly mud, shell, Virgularia	435956	1145794	60.1950	-1.3534	43.0
O2-5		gravelly mud, shell, Virgularia	436033	1145747	60.1945	-1.3520	44.0
O2-6		gravelly mud, shell, Virgularia	436089	1145705	60.1942	-1.3510	45.0
O3-1		gravelly sand, shell	435827	1146147	60.1981	-1.3556	40.4
O3-2		gravelly mud, shell	435847	1146143	60.1981	-1.3553	40.8
O3-3		gravelly mud, shell, Virgularia	435904	1146098	60.1977	-1.3543	41.2
O3-4		gravelly mud, shell, Virgularia	435973	1146048	60.1972	-1.3530	41.8
O3-5	Modiolus	gravelly mud, shell	436058	1146000	60.1968	-1.3515	43.0
O3-6		gravelly mud, shell, Virgularia	436139	1145956	60.1964	-1.3501	44.5
O4-1		gravelly mud, shell, Virgularia	435987	1146380	60.2002	-1.3527	40.3
O4-2		muddy sand, Turritella shell hash	436062	1146335	60.1998	-1.3514	41.9
O4-3		muddy sand, Turritella shell hash	436119	1146293	60.1994	-1.3504	40.8
O4-4		muddy sand, Turritella shell hash	436192	1146241	60.1990	-1.3490	43.2
O4-5		gravelly mud, shell, Virgularia	436292	1146200	60.1986	-1.3472	43.7
T1-1	Modiolus	muddy gravel, shell	436483	1146374	60.2001	-1.3438	32.3
T1-2	Modiolus	muddy gravel, shell	436531	1146448	60.2008	-1.3429	29.3
T1-3	Modiolus	muddy gravel, shell	436573	1146525	60.2015	-1.3421	26.8
T2-1		muddy sand, Turritella shell hash, Virgularia	435957	1145549	60.1928	-1.3534	43.5
T2-2		muddy sand, Turritella shell hash, Virgularia	436045	1145688	60.1940	-1.3518	44.4
T2-3		muddy sand, Turritella shell hash, Virgularia	436080	1145756	60.1946	-1.3512	44.3
T2-4		muddy sand, Turritella shell hash, Virgularia	436116	1145796	60.1950	-1.3505	44.5
T2-5		muddy sand, Turritella shell hash, Virgularia	436140	1145842	60.1954	-1.3501	44.5
T2-6		muddy sand, Turritella shell hash, Virgularia	436193	1145962	60.1965	-1.3491	44.3
T2-7		muddy sand, Turritella shell hash	436232	1146037	60.1971	-1.3484	44.3
T2-8		muddy sand, Turritella shell hash, Virgularia	436254	1146075	60.1975	-1.3480	44.0
T2-9		shell gravel, maerl fragments, algae	436346	1146331	60.1998	-1.3463	31.4
T2-10		shell gravel, maerl fragments, algae	436394	1146435	60.2007	-1.3454	14.5
T2-ext-1		muddy sand, Turritella shell hash	435859	1145419	60.1916	-1.3552	44.4
T2-ext-2		muddy sand, Turritella shell hash	435881	1145459	60.1920	-1.3548	43.6
T2-ext-3		muddy sand, Turritella shell hash, Virgularia	435932	1145525	60.1926	-1.3539	43.7
T2-ext-4		muddy sand, Turritella shell hash, Virgularia	435951	1145560	60.1929	-1.3535	43.8
T3-1	Modiolus	gravelly mud, shell	435748	1145552	60.1928	-1.3572	35.0
T3-2		gravelly mud, shell	435826	1145671	60.1939	-1.3557	42.2
T3-3		gravelly mud, shell, Virgularia	435831	1145817	60.1952	-1.3556	41.2
T3-4		gravelly mud, shell, Virgularia	435976	1146011	60.1969	-1.3530	41.4
T3-5		gravelly mud, shell, Virgularia	436056	1146146	60.1981	-1.3515	41.7
T3-6		muddy sand, Turritella shell hash	436104	1146233	60.1989	-1.3506	39.9
T3-7		muddy sand, Turritella shell hash	436157	1146316	60.1996	-1.3497	31.3
T4-1		gravelly mud, shell	435805	1145956	60.1964	-1.3561	39.9
T4-2		gravelly mud, shell	435831	1146078	60.1975	-1.3556	40.2
T4-3		gravelly mud, shell, Virgularia	435904	1146209	60.1987	-1.3542	39.4
T4-4		gravelly mud, shell, Virgularia	435971	1146367	60.2001	-1.3530	39.4
T4-5		gravelly mud, shell, Virgularia	436049	1146523	60.2015	-1.3516	35.7
T4-6	Modiolus	muddy gravel, shell	436101	1146593	60.2021	-1.3506	27.7
T5-1		gravelly mud, shell	435811	1146230	60.1989	-1.3559	38.6
T5-2		gravelly mud, shell	435825	1146295	60.1995	-1.3557	38.3
T5-3		gravelly mud, shell, Virgularia	435826	1146332	60.1998	-1.3556	38.0

Table 3. Locations of video stills