

# Marine Pen Fish Farm Permit

## South Bute

## CAR/L/1178014

For information on accessing this document in an alternative format or language, please contact SEPA by telephone (03000 99 66 99) or by email ([equalities@sepa.org.uk](mailto:equalities@sepa.org.uk))

If you are a user of British Sign Language (BSL), the Contact Scotland BSL service (<https://contactscotland-bsl.org>) gives you access to an online interpreter enabling us to communicate with you using sign language.

## Introduction

**This introduction does not form part of the permit.**

## Authorisations

**Who we are:** The Scottish Environment Protection Agency (SEPA) is a non-departmental public body of the Scottish Government, established under the Environment Act 1995. Our purpose is to deliver environmental protection and improvement in ways that, as far as possible, also create health and wellbeing benefits and sustainable economic growth.

**Why we issue authorisations:** SEPA is responsible for preventing or controlling pollution and improving the quality of the environment. This responsibility includes regulating industrial and other processes that may be capable of causing pollution of the environment. One of the tools available to SEPA is the authorisation of certain activities that may present a risk to the environment.

Anyone who wishes to carry out one of these activities has to first apply to SEPA for an authorisation, be granted the authorisation, and thereafter carry out activities in line with conditions contained within the authorisation. It is an offence under the relevant legislation to breach a condition of an authorisation.

**When we issue authorisations:** SEPA will issue an authorisation when satisfied that an applicant has put in place measures to protect the environment and is capable of carrying out activities in line with the conditions of an authorisation. Authorisations allow activities to occur and set performance outcomes based on a site's environmental risk. SEPA can amend, suspend or revoke an authorisation in response to changes in legislation, site activities or authorisation holder performance. Sites that hold an authorisation may be monitored and inspected by SEPA Officers who assess compliance with the conditions of the authorisation. All authorisations and inspection reports are publicly available.

**Enforcement:** If an authorisation holder (or site operator) fails to comply with the conditions of the authorisation it may result in enforcement action being taken against it by SEPA in accordance with SEPA's enforcement policy and guidance.

### General site information:

<b>Site Name and Location:</b>	South Bute Marine Pen Fish Farm, Firth of Clyde
<b>Description of Authorised Activities:</b>	The discharge to the water environment of fish excreta, uneaten food and other substances as listed in this permit resulting from the operation of a marine pen fish farm.
<b>Environmental risks SEPA has regulatory powers to control:</b>	The impact on the water environment due to the discharge of organic material and medicine residues from a pen fish farm.

Authorisation Number: CAR/L/1178014

This authorisation has been granted by the Scottish Environment Protection Agency (SEPA) in exercise of its powers under The Water Environment (Controlled Activities) (Scotland) Regulations 2011.

<b>Authorisation Number:</b>	CAR/L/1178014
<b>Authorised Person:</b>	Dawnfresh Farming Ltd
<b>Date of Authorisation:</b>	4 April 2022
<b>Authorised Activities:</b>	The discharge to the water environment of fish excreta, uneaten food and other substances as listed in this permit resulting from the operation of a marine pen fish farm.
<b>Authorised Place:</b>	South Bute Marine Pen Fish Farm
<b>Conditions applicable to this authorisation:</b>	The conditions in Schedules 1 to 8 of this authorisation. Terms used in this authorisation are, unless otherwise specified, defined in Schedule 8.

## Contents

<b>Schedule 1:</b>	<b>The Authorised Person and Activities .....</b>	<b>3</b>
1.1	Authorised Activities.....	3
1.2	Duty of Authorised Person .....	3
<b>Schedule 2:</b>	<b>Marine Pen Fish Farm Description .....</b>	<b>4</b>
2.1	Fish Species.....	4
2.2	Maximum Weight of Fish .....	4
2.3	Fallow Period.....	4
2.4	Pen Configuration .....	5
<b>Schedule 3:</b>	<b>Medicine Use .....</b>	<b>7</b>
3.1	Medicine Minimisation.....	7
3.2	Medicines and Chemical Use .....	7
3.3	Permitted Substance List .....	7
3.4	Bath Medicinal Treatments .....	7
3.5	Notification of Medicine Use .....	9
<b>Schedule 4:</b>	<b>Seabed Standards .....</b>	<b>10</b>
4.1	Biological Seabed Standards.....	10
<b>Schedule 5:</b>	<b>Environmental Monitoring .....</b>	<b>11</b>
5.1	Environmental Monitoring Plan.....	11
5.2	Biological Sampling.....	11
5.3	Notification of Monitoring .....	11
<b>Schedule 6:</b>	<b>Environmental Events.....</b>	<b>12</b>
6.1	Notification of SEPA.....	12
6.2	Management of the Event.....	12
6.3	Reporting of the Event .....	12
<b>Schedule 7:</b>	<b>Record Keeping and Data Submission .....</b>	<b>13</b>
7.1	Data Recording .....	13
7.2	Data Reporting .....	13
<b>Schedule 8:</b>	<b>Interpretation of Terms .....</b>	<b>16</b>

## Schedule 1: The Authorised Person and Activities

**Purpose:** This schedule sets out what the authorised activities are and places responsibility on the authorised person for ensuring compliance with the permit conditions.

### 1.1 Authorised Activities

- 1.1.1 The authorised activities are the discharge to the water environment of fish excreta, uneaten food and other substances as listed in this permit resulting from the operation of a marine pen fish farm.

### 1.2 Duty of Authorised Person

- 1.2.1 The authorised person must ensure compliance with the conditions of this permit.

## Schedule 2: Marine Pen Fish Farm Description

**Purpose:** This schedule limits the scale of the impact from the activities by controlling the maximum weight of fish, fallow periods and the specific location and layout of the fish farm.

### 2.1 Fish Species

2.1.1 Rainbow Trout (*Oncorhynchus mykiss*) must only be farmed at the site.

### 2.2 Maximum Weight of Fish

2.2.1 The maximum weight of Rainbow Trout held on site at any one time must not exceed 2500 tonnes.

### 2.3 Fallow Period

2.3.1 There must be a minimum period of 42 consecutive days between every production cycle during which Rainbow Trout must not be kept on site.

2.3.2 SEPA must be notified in writing within 14 days of the site being stocked.

2.3.3 SEPA must be notified in writing within 14 days of the site being fallowed.

2.3.4 The information required by 2.3.2 and 2.3.3 must be sent to [aquaculture.notifications@sepa.org.uk](mailto:aquaculture.notifications@sepa.org.uk).

Authorisation Number: CAR/L/1178014

## 2.4 Pen Configuration

2.4.1 The fish pens must be configured as set out in Table 1.

**Table 1 Pen Configuration**

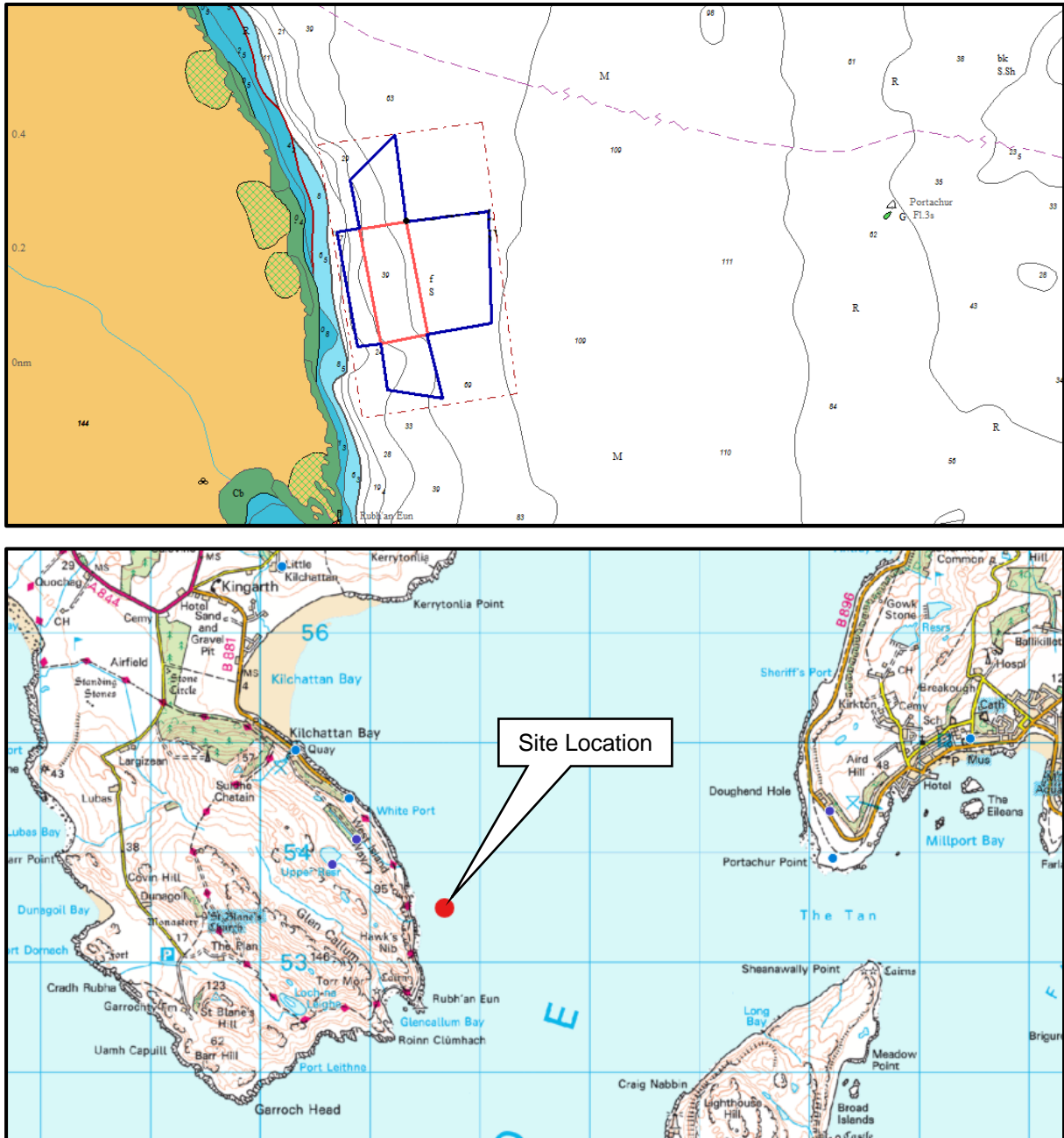
Number of pens	10
Circumference of pens	120m
Depth of nets	16m
Number of different pen groups	1
Number of pens in each group	10
Number of pens in row 1	5
Number of pens in row 2	5

2.4.2 The authorised location of the fish pen group is within an area delineated by the red line in Figure 1 and bounded by the pen corner buoys located at the following National Grid References (NGRs):

1. NS 1159 5354 (NW)
2. NS 1174 5356 (NE)
3. NS 1179 5319 (SE)
4. NS 1164 5317 (SW)

2.4.3 The pen corner buoys must not be located at a distance greater than 50 metres in any direction from the NGRs listed in 2.4.2.

Figure 1 Fish Pen Location





## Schedule 3: Medicine Use

**Purpose:** This schedule sets out SEPA's expectation that the authorised person will manage their site in such a way that it minimises the discharge of medicines into the water environment. Where it is necessary to use medicines the conditions control their use to meet environmental standards.

### 3.1 Medicine Minimisation

- 3.1.1 All reasonable steps must be taken to minimise the discharge of medicines and medicine residues.

### 3.2 Medicines and Chemical Use

- 3.2.1 Only those medicines and chemicals specifically authorised in this Permit or in the Permitted Substances Working Plan (PSWP), PSWP/CAR/L/1178014, Version 1, dated 13 July 2021 may be discharged to the water environment.

### 3.3 Permitted Substance List

- 3.3.1 All medicines and chemicals named in the Permitted Substances Working Plan (PSWP), PSWP/CAR/L/1178014, Version 1, dated 13 July 2021 must be used in accordance with the limits specified in the PSWP.

### 3.4 Bath Medicinal Treatments

- 3.4.1 The medicines in Table 2 must only be discharged following treatment of fish within an enclosure fully separated from the water environment or following treatment of the fish within a vessel.

**Table 2 Permitted Medicines - Bath**

Medicine name	Active ingredient
Salmosan, Salmosan Vet or Azasure	Azamethiphos
AMX or ALPHAMAX	Deltamethrin

3.4.2 The quantity of medicines in Table 2 used, whether in a pen or a vessel or a combination of both must not exceed:

- (a) 217.8 grams of azamethiphos in any 24 hour period.
- (b) 46.83 grams of deltamethrin in any 3 hour period.

3.4.3 During any treatment:

- (a) the medicines in Table 2 must not be combined in either a pen or vessel;
- (b) in-feed medicines and the medicines in Table 2 must not be used simultaneously in the same pen; and
- (c) the medicines in Table 2 must not be combined with any other substance or compound unless the substance or compound is specifically authorised in the PSWP and is used in accordance with the limits in the PSWP.

3.4.4 When carrying out treatments in a pen, the enclosure in which fish are treated with Azamethiphos or Deltamethrin must be reduced by a minimum of 70% of the full pen volume.

3.4.5 Abstraction of seawater into a vessel for use during medicinal treatments of fish and discharges of medicines from a vessel must only be made whilst the vessel is:

- (a) moored immediately adjacent to the fish pens; or
- (b) maintaining position immediately adjacent to the fish pens.

### 3.5 Notification of Medicine Use

- 3.5.1 SEPA must be given the information required in Table 3 no fewer than 2 days before using any medicine in Table 2.

**Table 3 Bath Medicine Notifications**

Medicine type	Information required
Bath medicines	Quantity of medicine to be used (g or l)
	Quantity of active ingredient to be used (g or ml)
	Number of pens to be treated
	Proposed start and end date of treatment
	The name of any substance from the PSWP to be used in combination with the bath medicine
	Whether treatment will be in-pen, in-vessel or a combination of both
	Name of the vessel to be used, where applicable

- 3.5.2 The information required by 3.5.1 must be sent to [aquaculture.notifications@sepa.org.uk](mailto:aquaculture.notifications@sepa.org.uk).

## Schedule 4: Seabed Standards

**Purpose:** This schedule details the minimum environmental standards that must be met.

### 4.1 Biological Seabed Standards

- 4.1.1 The level of enrichment of the seabed immediately adjacent to the outer edge of any pen must not result in either:
- (a) fewer than 2 species of re-worker polychaete worms per square metre; or
  - (b) fewer than 1,000 individual re-worker polychaete worms per square metre.
- 4.1.2 In assessing compliance with 4.1.1, the results for a particular location may be disregarded if:
- (a) the seabed has been sampled at 4 or more locations immediately adjacent to the outer edge of any pens during the same monitoring period; and
  - (b) only one of the sampled locations does not meet the standard in 4.1.1.
- 4.1.3 The seabed around the fish farm at the boundary of an area of 154,828m<sup>2</sup> (the “mixing zone”) must meet as a minimum an Ecological Quality Ratio (EQR) of 0.64 IQI (Infaunal Quality Index) at any time.

## Schedule 5: Environmental Monitoring

**Purpose:** This schedule requires the authorised person to carry out environmental monitoring in line with SEPA guidance.

### 5.1 Environmental Monitoring Plan

5.1.1 An Environmental Monitoring Plan (EMP), written in accordance with Interim Performance Standard MACS-FFA-01, Version 0.1, dated June 2019 must be submitted to SEPA no later than 31 December 2022.

### 5.2 Biological Sampling

5.2.1 During each production cycle, sampling to assess the standards in 4.1.1 and 4.1.3 must be carried out within a 70 day period beginning 35 days before the weight of fish is reduced to 75% of final peak biomass.

### 5.3 Notification of Monitoring

5.3.1 SEPA must be notified no fewer than 14 days before sampling in accordance with 5.2.1 is undertaken.

5.3.2 SEPA must be notified as soon as is reasonably practicable and in any case within 48 hours if monitoring is not carried out in accordance with:

- (a) the monitoring requirements referenced in 5.1.1; or
- (b) the sampling period described in 5.2.1

5.3.3 The information required by 5.3.1 and 5.3.2 must be sent to [aquaculture.notifications@sepa.org.uk](mailto:aquaculture.notifications@sepa.org.uk)

## Schedule 6: Environmental Events

**Purpose:** This schedule requires the cessation, prevention and reporting of any potentially polluting event that may arise from the authorised activities.

### 6.1 Notification of SEPA

- 6.1.1 SEPA must be notified via its pollution hotline contact telephone number as soon as reasonably practicable, and in any case within 24 hours of identification of an event, of any of the following:
- (a) an event that has caused or could cause adverse impact to the environment or harm to human health;
  - (b) an event that results, or could result, in an emission to the environment that is not authorised by this permit; and
  - (c) an event that has caused a breach of a condition of this authorisation.

### 6.2 Management of the Event

- 6.2.1 All measures that are reasonably practicable must be taken to stop an event, as described in 6.1.1, and to minimise its effect on the environment.

### 6.3 Reporting of the Event

- 6.3.1 Within 14 days of an event as described in 6.1.1, a report must be submitted to SEPA detailing:
- (a) the reason(s) for the event;
  - (b) the action(s) taken to stop the event and minimise the impacts; and
  - (c) the action(s) taken to prevent the event from recurring.

## Schedule 7: Record Keeping and Data Submission

**Purpose:** This schedule requires the authorised person to keep records of specific activities carried out on site and to provide SEPA with specified information at regular intervals, or upon request.

### 7.1 Data Recording

7.1.1 All information recorded, kept, or submitted to SEPA in accordance with a condition of this Permit must be:

- (a) true and accurate;
- (b) held for a minimum period of 6 years, and;
- (c) provided to SEPA upon request.

7.1.2 Records must be kept of the following:

- (a) all medicine use notifications;
- (b) quantities of medicine used during each medicinal treatment (g or l);
- (c) weight of Rainbow Trout at end of each medicinal treatment (t);
- (d) total weight of Rainbow Trout harvested per month (t).

### 7.2 Data Reporting

7.2.1 The information specified in Table 4 must be submitted on a quarterly basis no later than the relevant submission deadline in Table 5 for every calendar year during which the site is operational.

**Table 4 Data Reporting Requirements**

Requirement number	Information to be Submitted
1	Maximum weight of Rainbow Trout held on site during each month (t)
2	Total amount of feed used per month (kg)
3	Total Salmosan and/or Salmosan Vet and/or Azasure used in each treatment (g)
4	Total AMX and/or ALPHAMAX used in each treatment (l)
5	Total azamethiphos used in each treatment (g)
6	Total deltamethrin used in each treatment (g)
7	Daily start and end times of each bath medicinal treatment
8	Start and finish dates of each medicinal treatment
9	Dates in each medicinal treatment on which medicines were used
10	Name of vessel used, where applicable
11	Total use of each anti-parasitic listed in the PSWP each month (g)
12	Total use of each anti-microbial listed in the PSWP each month (g)
13	Total weight of mortalities of Rainbow Trout each month (kg)

**Table 5 Data Reporting Submission Deadline**

Quarter	Reporting Period	Submission Deadline
1	1 January – 31 March	28 April
2	1 April – 30 June	28 July
3	1 July – 30 September	28 October
4	1 October – 31 December	28 January

7.2.2 Results from the analysis of all samples collected in accordance with 5.1.1 must be submitted to SEPA no later than 16 weeks from the final date of each sampling period, as described in 5.2.1 and 5.3.1.



**Authorisation Number:** CAR/L/1178014



- 7.2.3 Within 4 weeks of the end of each production cycle a description of each of the steps taken in accordance with 3.1.1 and the dates and/or time period(s) over which they were implemented must be submitted to SEPA.
- 7.2.4 The information required by 7.2.1, 7.2.2 and 7.2.3 must be submitted via email, in the SEPA Marine Fish Farm Data Return Excel spreadsheet supplied by SEPA, to [aquaculture.monitoring@sepa.org.uk](mailto:aquaculture.monitoring@sepa.org.uk).

## Schedule 8: Interpretation of Terms

For the purposes of this permit, and unless the context requires otherwise, the following definitions apply.

Term	Definition
authorisation	the water use licence granted by SEPA under Regulation 8 of The Water Environment (Controlled Activities) (Scotland) Regulations 2011 with licence number CAR/L/1178014.
authorised activities	the activities which may be carried on under this authorisation, as detailed in Schedule 1.
authorised person	the holder of this authorisation, and person responsible for securing compliance with the conditions of it.
authorised place	the geographic location or locations at which the authorised activities may be carried on.
biomass	the total weight of fish, in tonnes, held on site at any one time.
controlled activity	an activity to which the regulations apply, in accordance with regulation 3(1) of the Regulations.
environmental harm	<p>(a) Harm to the health of human beings or other living organisms,</p> <p>(b) Harm to the quality of the water environment, including:</p> <ul style="list-style-type: none"> <li>(i) harm to the quality of the water environment taken as a whole</li> <li>(ii) other impairment of, or interference with, the quality of aquatic ecosystems or terrestrial ecosystems directly depending on aquatic ecosystems,</li> </ul> <p>(c) offence to the senses of human beings,</p> <p>(d) damage to property, or</p> <p>(e) impairment of, or any interference with, amenities or other legitimate uses of the water environment.</p>

Term	Definition
event	<ul style="list-style-type: none"> <li>any accident which has caused or could cause environmental harm; or</li> <li>any malfunction, breakdown or failure of plant, infrastructure or techniques which has caused or could cause environmental harm; or</li> <li>force majeure or action taken to save human life or limb.</li> </ul>
final peak biomass	the period during which the total weight of fish held on site is at peak biomass for the last time before harvesting in each production cycle.
maximum environmental quantity	the maximum residual quantity of Emamectin Benzoate in the environment at any one time taking into account excretion and decay of all previous treatments which if complied with will meet the environmental quantity standard at the edge of the mixing zone.
mixing zone	the area of seabed immediately under and extending outwards from a fish farm in which the discharge from the fish farm is likely to have an adverse impact on the environment.
peak biomass	the maximum weight of fish, in tonnes, held on site during a single production cycle.
Pen	an enclosed cage, net or other structure in which fish are kept.
Permit	an authorisation under regulation 8 of the Water Environment (Controlled Activities) (Scotland) Regulations 2011.
production cycle	any period of time during which fish are on-grown in pens at sea until they are removed for transfer and/or slaughter.
SEPA Officer	any person who is authorised by SEPA under <a href="#">regulation 31(4)</a> of the Regulations to exercise the powers specified in Part 1 of Schedule 6 of the Regulations for the purposes specified in Regulation 31(5) of the Regulations.
SEPA	Scottish Environment Protection Agency
the water environment	all surface water, groundwater and wetlands.
vessel	any ship, boat, craft or other vehicle which is used to carry out sea lice medicine treatments.

Authorisation Number: CAR/L/1178014

Term	Definition
weight of fish	the weight of fish including stomach contents and body fluids. This shall not be after any period of starvation.

Except where specified otherwise, any reference to an enactment or statutory instrument includes a reference to it as amended (whether before or after the date of the permit) and to any other enactment, which may after the date of the permit replace or amend it.