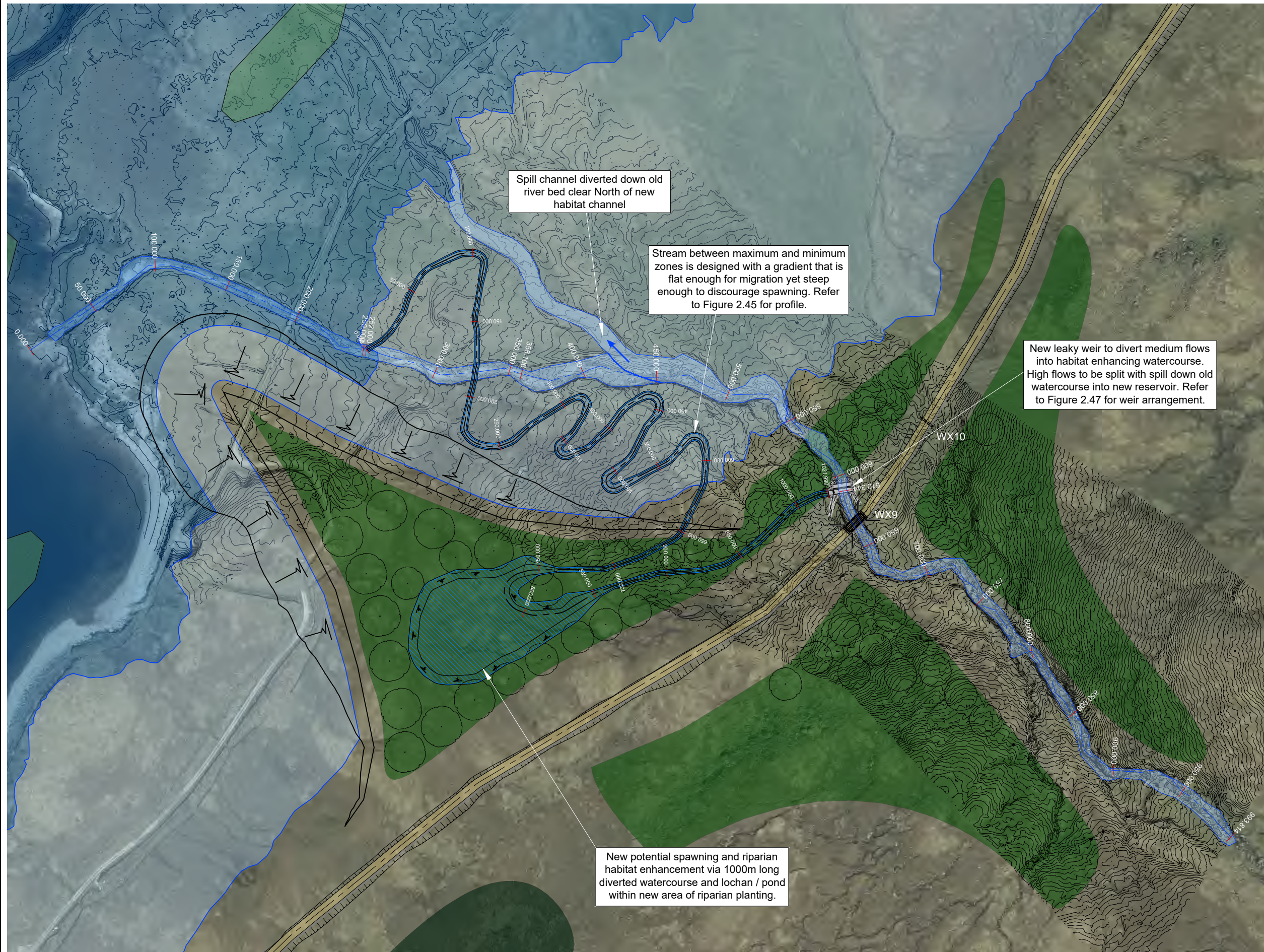




North



IF IN DOUBT - ASK

NOTES

- All levels are in metres above ordnance datum (mAOD).
- All chainages are in metres.

LEGEND

- Existing Stream
- New Stream and Lochan
- New Tree Planting - Riparian Mix
- New Tree Planting - Upland Mix
- New Tree
- +376m Maximum Inundation Level
- +355m Minimum Water Level
- Promontory
- PSH Track
- Floating Habitat

| | | | | | |
|-----|----------|-------|------------------------|------|-------|
| P2 | 13.11.24 | MH | CAR LICENCE SUBMISSION | DT | GMcG |
| P1 | 29.08.24 | MH | PRELIMINARY | DT | GMcG |
| REV | DATE | DRAWN | NOTES | CHKD | APP'D |

GILKES energy

FESTIVAL HOUSE
177 WEST GEORGE STREET
GLASGOW
G2 2LB
UNITED KINGDOM
T: 01159 720 028
E: info@gilkesenergy.com
W: www.gilkesenergy.com

CLIENT

EARBA STORAGE
A GILKES ENERGY COMPANY

PROJECT

PROPOSED EARBA PSH

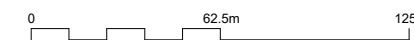
TITLE

MOY BURN HABITAT ENHANCEMENT WORKS AREA PLAN - FIGURE 2.44.1

| | | |
|----------------|-------------|-------------|
| SIZE | SCALE AT A3 | STATUS |
| A3 | 1:2500 | PRELIMINARY |
| DRAWING NUMBER | REVISION | |
| EAR/GEL/240 | P2 | |

© Crown Copyright and database rights 2023.
Ordnance Survey License Number 100048957.
Supplied by: www.ukmapcentre.com

Plan
Moy Burn Spawning Habitat Enhancement
1:1250 @ A1, 1:2500 @ A3



© GILKES ENERGY LIMITED
THIS DOCUMENT IS ISSUED FOR THE PARTY WHICH COMMISSIONED IT AND FOR SPECIFIC PURPOSES CONNECTED WITH THE CAPTIONED PROJECT ONLY. IT SHOULD NOT BE RELIED UPON BY ANY OTHER PARTY FOR ANY OTHER PURPOSE. GILKES ENERGY LIMITED ACCEPTS NO RESPONSIBILITY FOR THE CONSEQUENCES OF THIS DOCUMENT BEING RELIED UPON BY ANY OTHER PARTY, OR BEING USED FOR ANY OTHER PURPOSE, OR CONTAINING ANY ERROR OR OMISSION WHICH IS DUE TO AN ERROR OR OMISSION IN DATA SUPPLIED TO US BY OTHER THIRD PARTIES.