

# Marine Aquaculture Site **Rum**

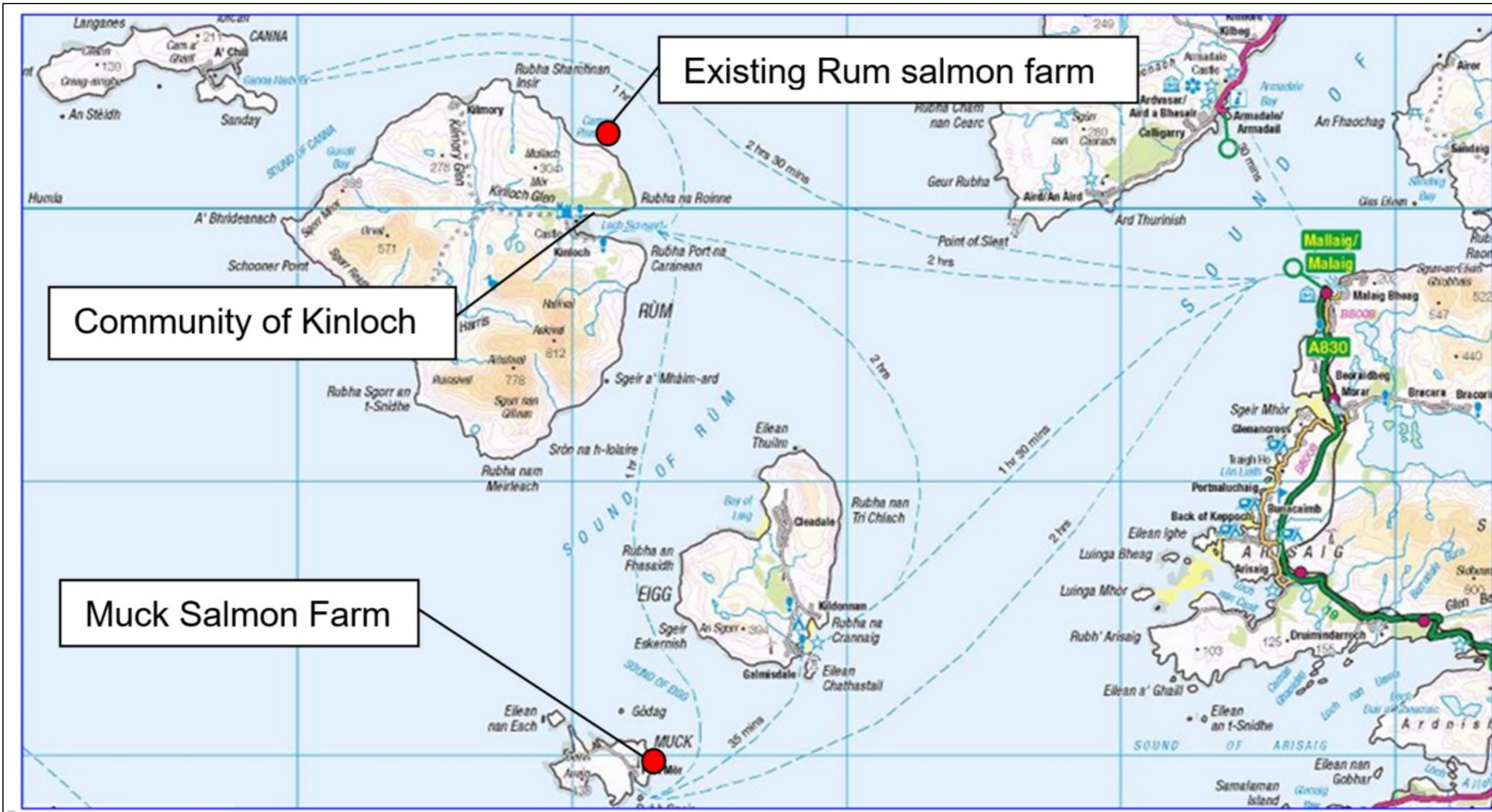
## PLANNING APPLICATION

### Annex 6.1: Location map and charts

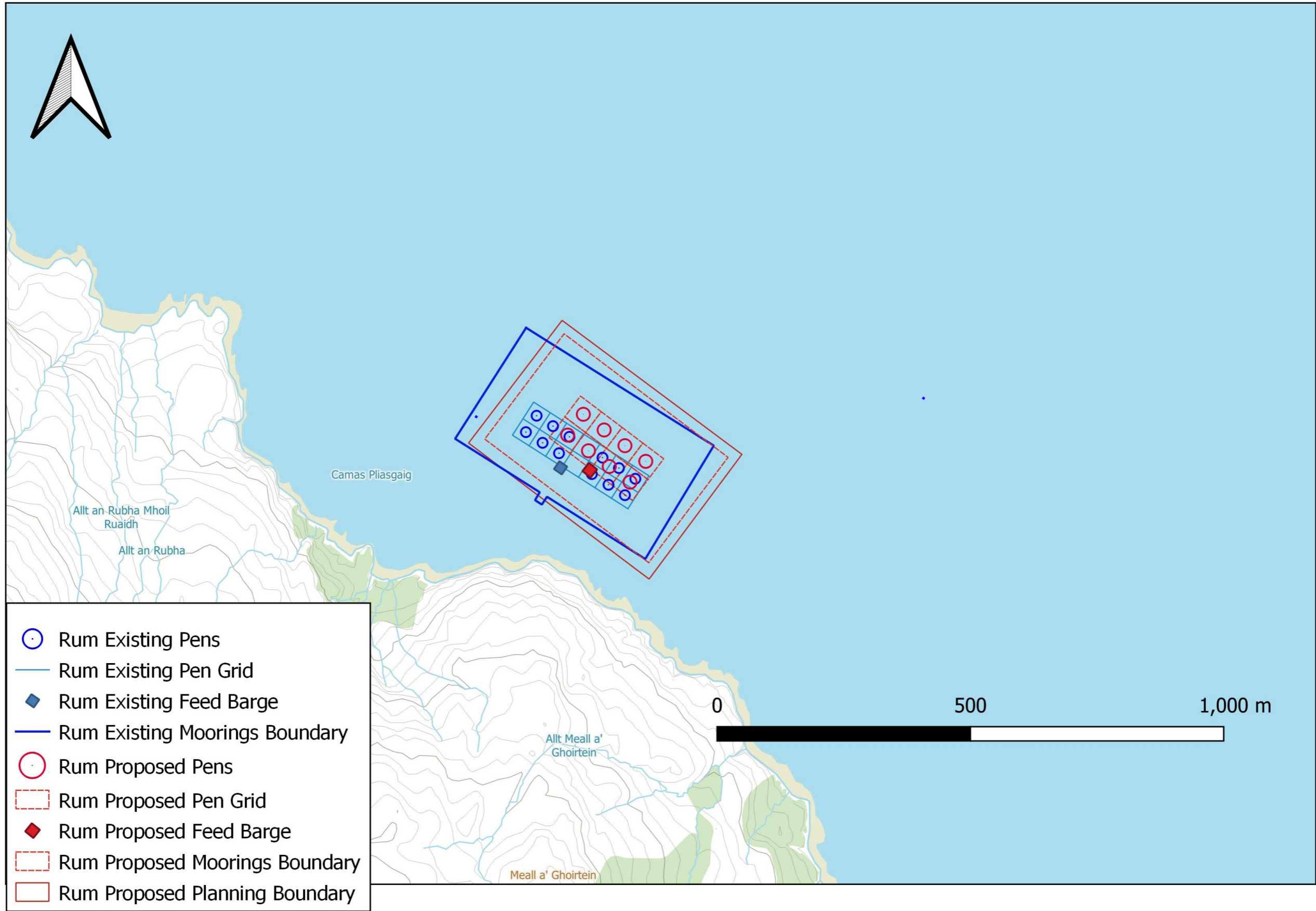
Mowi Scotland Limited

June 2022

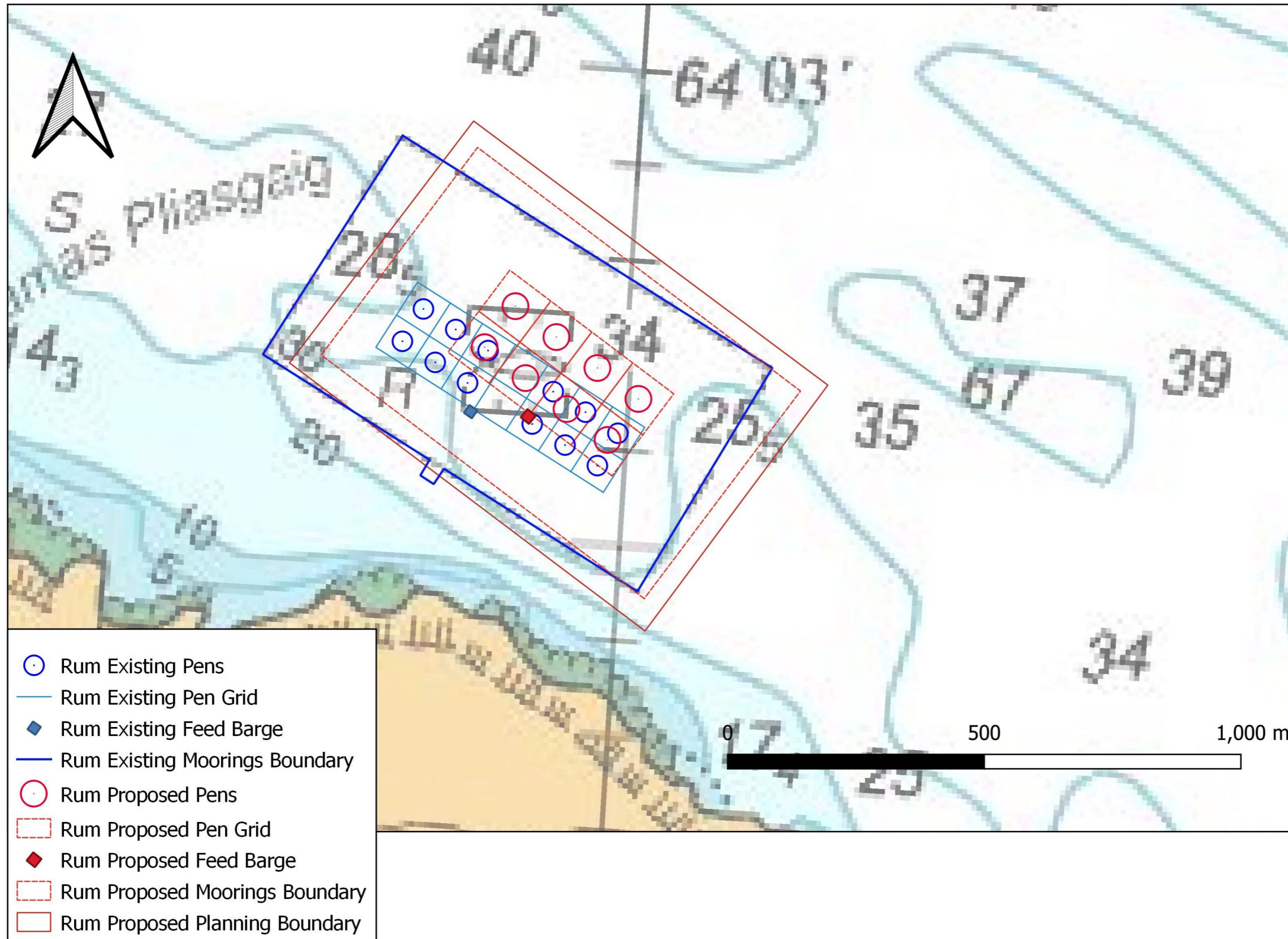
<b>Registered in Scotland No. 138843</b> Registered Office: 1st Floor, Admiralty Park Admiralty Road Rosyth FIFE KY11 2YW	Office postal address: Farms Office Glen Nevis Business Park Fort William PH33 6RX	Email: <span style="background-color: black; color: black;">[REDACTED]</span>
		Website: <a href="http://mowi.com">http://mowi.com</a>



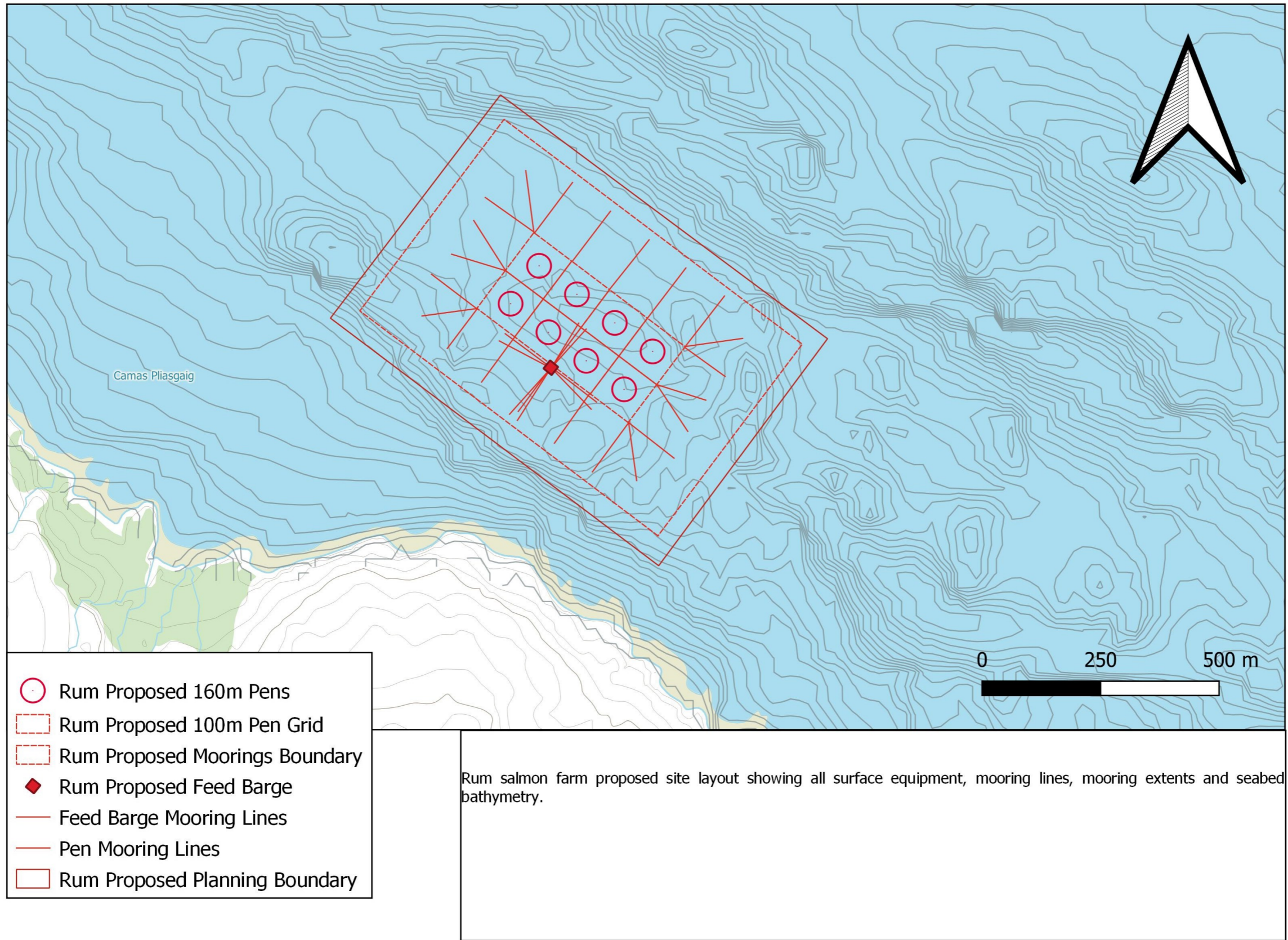
**Figure 1:** Location of the existing Rum Salmon Farm in relation to the community of Kinloch on Rum and the Muck Salmon farm also operated by Mowi Scotland Limited.



**Figure 2:** Rum salmon farm location map with existing and proposed site layouts showing all surface equipment



**Figure 3:** Rum salmon farm detailed existing and proposed site layouts showing all surface equipment and mooring extents.



**Figure 4:** Bathymetry chart: Rum salmon farm proposed site layouts showing all surface equipment, mooring lines, mooring extents and seabed bathymetry.

## EXISTING RUM SITE

### PEN CENTRES:

141247E	802759N
141184E	802799N
141120E	802840N
141287E	802822N
141224E	802863N
141161E	802903N
140994E	802920N
140931E	802960N
140867E	803001N
141034E	802983N
140971E	803024N
140908E	803064N

### PEN GRID OUTLINE

141259E	802707N
141339E	802833N
140897E	803116N
140815E	802989N

### MOORING OUTLINE

140902E	802740N
140920E	802770N
140595E	802975N
141325E	802514N
141588E	802949N
140868E	803401N
140948E	802753N
140928E	802723N

### FEED BARGE

141000E	802864N
---------	---------

## PROPOSED RUM SITE

### PEN CENTRES

141087E	803069N
141027E	802990N
141167E	803009N
141107E	802929N
141247E	802949N
141187E	802869N
141327E	802889N
141267E	802809N

### PEN GRID OUTLINE

141396E	802899N
141275E	802739N
140956E	802980N
141076E	803139N

### MOORING OUTLINE

141338E	802500N
140709E	802974N
141013E	803378N
141643E	802904N
141338E	802500N

### FEED BARGE

141112E	802855N
---------	---------

### PLANNING BOUNDARY

141005E	803429N
141696E	802915N
141339E	802437N
140646E	802959N