

# Proposed Marine Fish Farm: **Muck**

## Licence reference: CAR/L/1109999

### Annex 6.1: Location map and charts

Mowi Scotland Limited  
January 2022

<b>Registered in Scotland No. 138843</b> Registered Office: 1st Floor, Admiralty Park Admiralty Road Rosyth FIFE KY11 2YW	Office postal address: ██████████ ████████████████████ ██████████ ██████████	Email: ████████████████████
		Website: ████████████████████

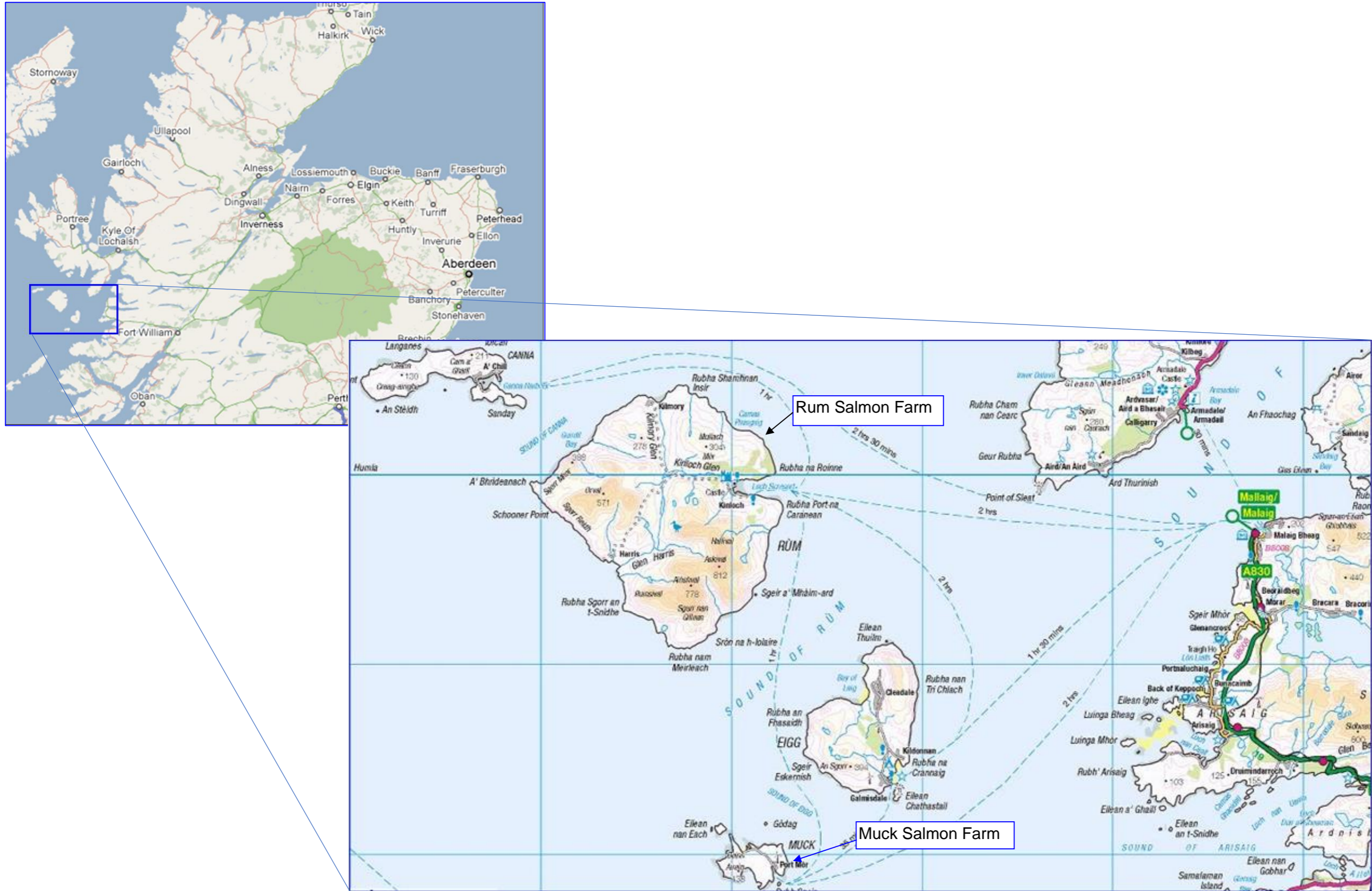


Figure 1: Location of the existing Muck Salmon Farm in relation to the Rum Salmon farm also operated by Mowi Scotland Limited.

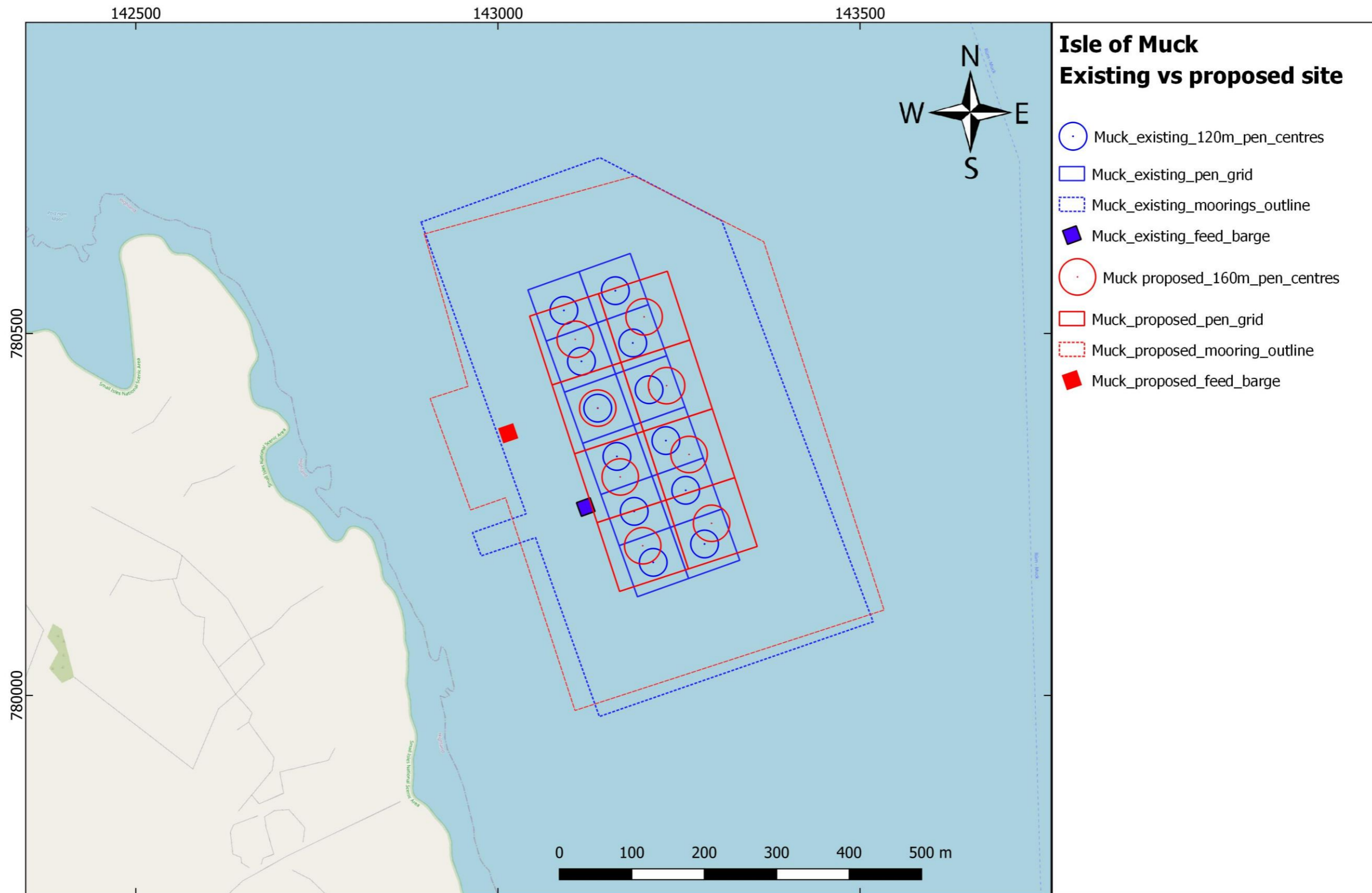
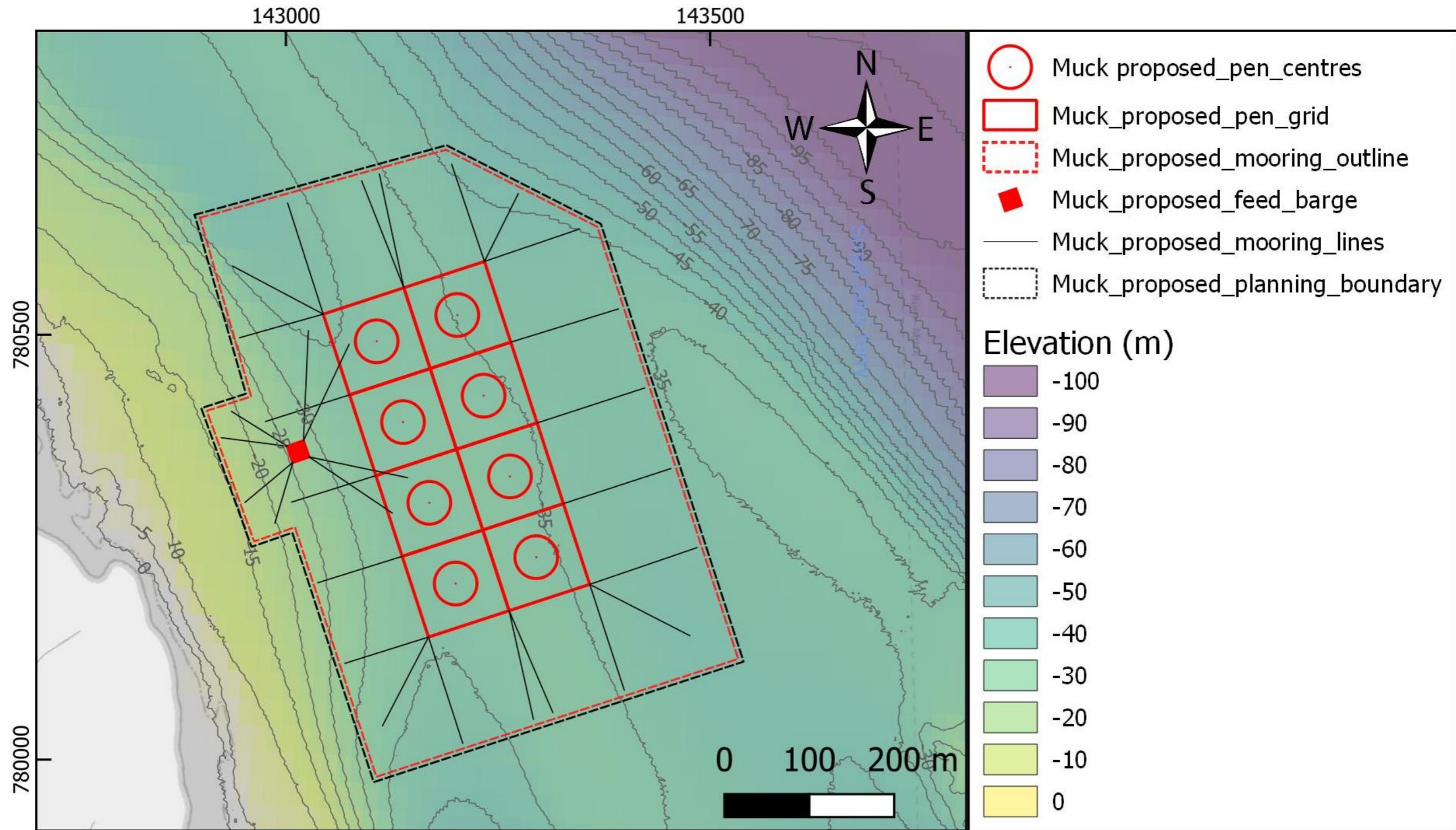


Figure 2: Muck salmon farm location map with existing and proposed site layouts showing all surface equipment and mooring extents.



**Figure 3:** Bathymetry chart: Muck salmon farm detailed proposed site layout showing all surface equipment, provisional mooring extents and water depths.

## EXISTING MUCK SITE

### PEN CENTRES

56 50.696N	6 12.876W	E143091	N780532
56 50.713N	6 12.808W	E143162	N780559
56 50.659N	6 12.848W	E143115	N780462
56 50.675N	6 12.780W	E143186	N780487
56 50.625N	6 12.822W	E143138	N780397
56 50.641N	6 12.754W	E143209	N780422
56 50.590N	6 12.792W	E143164	N780330
56 50.550N	6 12.764W	E143188	N780254
56 50.513N	6 12.734W	E143214	N780184
56 50.529N	6 12.666W	E143285	N780209
56 50.568N	6 12.696W	E143259	N780283
56 50.604N	6 12.727W	E143232	N780352

### PEN GRID OUTLINE

56 50.696N	6 12.876W	E143091	N780532
56 50.713N	6 12.808W	E143162	N780559
56 50.659N	6 12.848W	E143115	N780462
56 50.675N	6 12.780W	E143186	N780487

### MOORING OUTLINE

56 50.770N	6 12.670W	E143309	N780656
56 50.811N	6 12.840W	E143344	N780730
56 50.479N	6 12.431W	E143518	N780102
56 50.396N	6 12.794W	E143140	N779971
56 50.755N	6 13.077W	E142894	N780654

### FEED BARGE

56 50.551N	6 12.830W	E143121	N780260
------------	-----------	---------	---------

### PLANNING BOUNDARY

56 50.770N	6 12.670W	E143309	N780656
56 50.811N	6 12.840W	E143343	N780730
56 50.479N	6 12.431W	E143518	N780102
56 50.396N	6 12.794W	E143140	N779971
56 50.755N	6 13.077W	E142894	N780654
56 50.543N	6 12.910W	E154212	N779576
56 50.527N	6 12.981W	E142965	N780225
56 50.510N	6 12.967W	E142977	N780193
56 50.526N	6 12.895W	E143052	N780218

## PROPOSED MUCK SITE

### PEN CENTRES

56 50.525N	6 12.750W	E143200	N780207
56 50.545N	6 12.658W	E143295	N780238
56 50.575N	6 12.786W	E143169	N780302
56 50.595N	6 12.694W	E143264	N780333
56 50.625N	6 12.822W	E143138	N780397
56 50.645N	6 12.731W	E143233	N780428
56 50.675N	6 12.858W	E143107	N780492
56 50.695N	6 12.767W	E143202	N780523

### PEN GRID OUTLINE

56 50.490N	6 12.777W	E143168	N780144
56 50.530N	6 12.594W	E143358	N780206
56 50.690N	6 12.922W	E143044	N780524
56 50.730N	6 12.739W	E143234	N780586

### MOORING OUTLINE

56 50.746N	6 13.071W	E142898	N780638
56 50.799N	6 12.792W	E143189	N780718
56 50.756N	6 12.611W	E143367	N780627
56 50.488N	6 12.417W	E143533	N780118
56 50.399N	6 12.828W	E143106	N779979
56 50.554N	6 12.939W	E143010	N780273
56 50.544N	6 12.986W	E142962	N780256
56 50.624N	6 13.050W	E142906	N780410
56 50.635N	6 13.000W	E142959	N780427
56 50.746N	6 13.071W	E142898	N780638

### FEED BARGE

56 50.602N	6 12.941W	E143014	N780362
------------	-----------	---------	---------

### PLANNING BOUNDARY

56 50.748N	6 13.078W	E142892	N780641
56 50.802N	6 12.791W	E143189	N780723
56 50.758N	6 12.607W	E143371	N780630
56 50.487N	6 12.411W	E143540	N780115
56 50.396N	6 12.830W	E143103	N779973
56 50.551N	6 12.942W	E143007	N780267
56 50.540N	6 12.988W	E142959	N780250
56 50.626N	6 13.056W	E142900	N780413
56 50.637N	6 13.006W	E142953	N780430
56 50.748N	6 13.078W	E142892	N780641