

### Approximate Sampling Positions, Fishnish A, August 2020

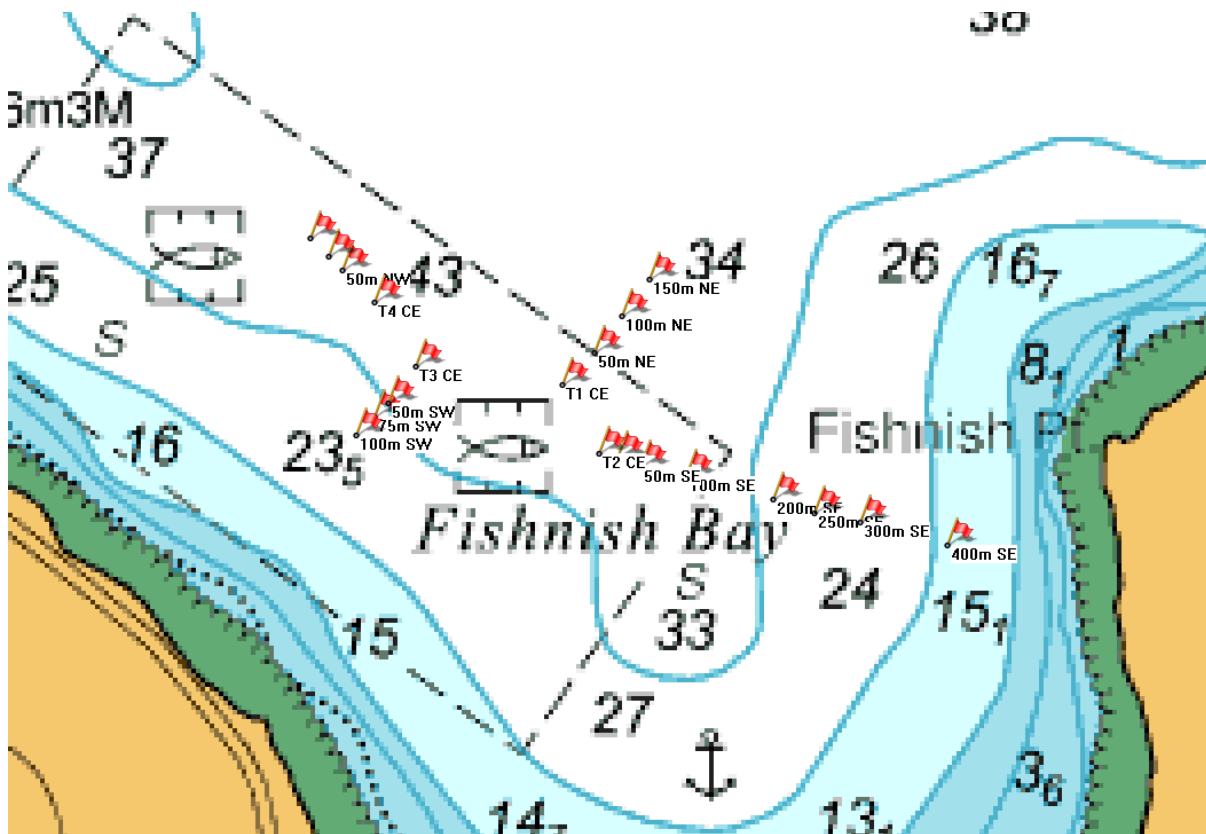


Figure 1: Approximate benthic survey sampling positions collected at Fishnish A, 2020.

Table 1: Transect information for sampling positions at Fishnish A.

Transect	Bearing	Distance	Easting	Northing	DGPS
1	039	0 m	164165	742697	56°31.019'N, 5°50.117'W
1	039	100 m	164233	742771	56°31.060'N, 5°50.055'W
1	039	150 m	164266	742808	56°31.081'N, 5°50.025'W
1	039	50 m	164199	742734	56°31.039'N, 5°50.086'W
2	105	0 m	164198	742621	56°30.979'N, 5°50.081'W
2	105	25 m	164221	742613	56°30.975'N, 5°50.058'W
2	105	50 m	164245	742606	56°30.972'N, 5°50.034'W
2	105	100 m	164291	742590	56°30.965'N, 5°49.989'W
2	105	200 m	164385	742560	56°30.951'N, 5°49.896'W
2	105	250 m	164432	742545	56°30.945'N, 5°49.849'W
2	105	300 m	164479	742530	56°30.938'N, 5°49.803'W
2	105	400 m	164572	742499	56°30.924'N, 5°49.711'W
3	220	0 m	164007	742728	56°31.030'N, 5°50.273'W
3	220	50 m	163973	742691	56°31.010'N, 5°50.304'W
3	220	75 m	163956	742673	56°30.999'N, 5°50.319'W
3	220	100 m	163938	742655	56°30.989'N, 5°50.336'W
4	317	0 m	163964	742798	56°31.067'N, 5°50.318'W
4	317	50 m	163931	742836	56°31.086'N, 5°50.352'W
4	317	75 m	163915	742855	56°31.086'N, 5°50.352'W
4	317	100 m	163899	742874	56°31.106'N, 5°50.386'W